

PRODUCTS FOR ATV & UTILITY VEHICLES



AGRICULTURE



EQUESTRIAN



FORESTRY



GAMEKEEPING



MUNICIPAL



WINTER
MAINTENANCE



Designed and manufactured in the UK... top quality equipment that works!



www.LogicToday.co.uk



Introduction and brief history

Today...

- Logic has two bases, one in Hexham, Northumberland where the main manufacturing centre is located – responsible for sales in northern England, Scotland, Ireland as well as all export sales. The second near Cheltenham, Gloucestershire is the main distribution centre responsible for sales in southern England and Wales.
- All our sales are handled through our national dealer network – due to the nature of our products, Logic does not sell direct or on line. To find your local Logic dealer, please contact our main Northern or Southern office.
- We have four sales people covering all areas of the UK and Ireland. There is always a representative available to deal with any queries and manage equipment demonstrations in partnership with our dealer network, ensuring our customer's requirements are met.
- We always take an interest in making sure our customers are satisfied with their purchase and will help in any way we can to achieve this.

Past milestones...

- 2018 LSP150 Surface-Pro introduced to provide a powered raise and lower equestrian conditioner and leveller with adjustable compaction for whatever riding discipline, on the latest wax composite surfaces.
- 2016 Launch of the tractor mounted CTM Weed Wiper models. Hydraulically operated with 2.5 and 6 metre operating widths. Grassland and Arable variants for pasture, cereals and row crops etc.
- 2014 the introduction of the MFT "Scrub Buster" flail mower, taking mowing performance to a new level.

- 2012 Logic gain Conformity of Production (CoP) clearance issued by the VCA confirming manufacturing consistency and quality. Road legal products now conform to the European Community Whole Vehicle Type Approval (ECWVTA).
- 2010 MSP Pro-Sweep launched raising the use of the sweeper collector to a professional level within diverse market places from sports pitch maintenance to heather/wild flower seed collection.
- 2006 new website launch www.LogicToday.co.uk encompassing a wealth of details.
- 2004 TRM120 rotary mower developed to introduce an affordable, high performance rotary topper to satisfy demand from customers with low acreage topping requirements.
- 2000 introduction of the revolutionary weed wiper, Contact 2000, which has proved to be the most efficient weed wiper on the market today.
- 1997 salt spreaders and de-icing product spreaders and sprayers developed. A compact, professional ground driven spreader to handle wet rock salt was produced to overcome all the problems of handling this difficult – but very effective – product.
- 1984 forest and woodland management equipment introduced with a range of Scandinavian tested equipment, including an extraction unit and timber hauling trailers.
- 1983 system 20 chassis developed and designed for the front of ATVs and more recently UTVs. The snow plough, power brush and yard scraper, are a few examples.
- 1982 grasscare equipment introduced, including flail mowers, ballast rollers, on board sprayers, sweeper/collectors and aerators.
- 1981 low ground pressure became a very important issue. Logic developed equipment that could be used in such conditions for spraying and spreading fertiliser, slug

pellets and herbicide granules. Advanced systems of spraying with controlled droplet application were used to achieve impressive figures of 100 plus acres per day in short autumn working days. These tasks resulted in a universal chassis called System 40 being developed, accommodating most apparatus for these purposes.

- 1980 slug peller designed to fit the back of an ATV which revolutionised the application of slug pellets for the cereal farmer.
- 1979 small trailers were produced together with tow bars for the first three wheeled ATVs.
- 1978 ATVs began to appear from America as fun machines. Logic's team realised in those early days that there was a market for equipment to complement the ATV and formed a department called Logic ATV Equip.
- 1974 the Logic Yard Scraper with quick attach system and the Logic 56 Bale Snatcher were the first major products to come out of the factory.
- 1971 The Logic tractor was the first product that really made people take notice. The innovative ideas behind this venture were so revolutionary it found its way onto the BBC 'Tomorrow's World' programme.



One of Logic's transport units ready to set off with another load of eagerly awaited products to dealers nationwide.

Logic has its roots firmly planted in agriculture – the need for new products arose from our company's founder, Willie Rutherford, living and working on the family farm in Northumberland during the 1960s and 1970s. His foundation of inspirational product design continues to drive the research and development of innovative ideas at Logic with new roots spreading into the equestrian, forestry, gamekeeping, municipal and winter maintenance sectors.

Add this to over 40 years of high quality British manufacturing experience and you realise why Logic is the leading brand in the UK – our keywords of **Innovation, Quality and Integrity** speak for themselves.



Logic tractor being worked on by Willie Rutherford (left).



Logic 56 Bale Snatcher revolutionised the collection of small bales.



The first Logic trailer to be mass produced. Some are still working today!



CONTENTS

| | | |
|--|--|-------|
| Introduction | Logic - Introduction and Brief History | 2 |
| | Contents | 3 |
| Trailers | Off Road STT Range | 4 |
| | Off Road SST Range | 5 |
| | Off Road OXR Range | 6 |
| | Off Road LBT Bale Trailer | 7 |
| | Off Road Tipping and General Trailers | 8 |
| | Off Road Forestry Trailers | 9 |
| | Road Legal XRT Range | 10 |
| | Road Legal VT, SXR Ranges | 11 |
| Feeders | Livestock Multi-Feeder Range | 12/13 |
| | Game, Poultry Chick Feeders | 14 |
| Bowsers | Bowsers 270 / 600 litre | 15 |
| Sprayers | On Board Sprayers Range | 16 |
| | Deck Mounted, 3 Point Linkage Models | 17 |
| | Trailed Sprayers Range | 18 |
| Weed Wipers | Contact 2000 | 19 |
| | Contact 2000 - Rush and Bracken Control | 20 |
| | Contact 2000 - Tractor Mounted CTM Models | 21 |
| Harrows, Rollers, Aerators, Graders | Tine Harrows, Pro-Harrow, Super-Harrow | 22 |
| | Chain Harrows, Ballast Rollers, Aerator | 23 |
| | Surface-Pro Leveller, Pro-Grade Surface Grader | 24 |



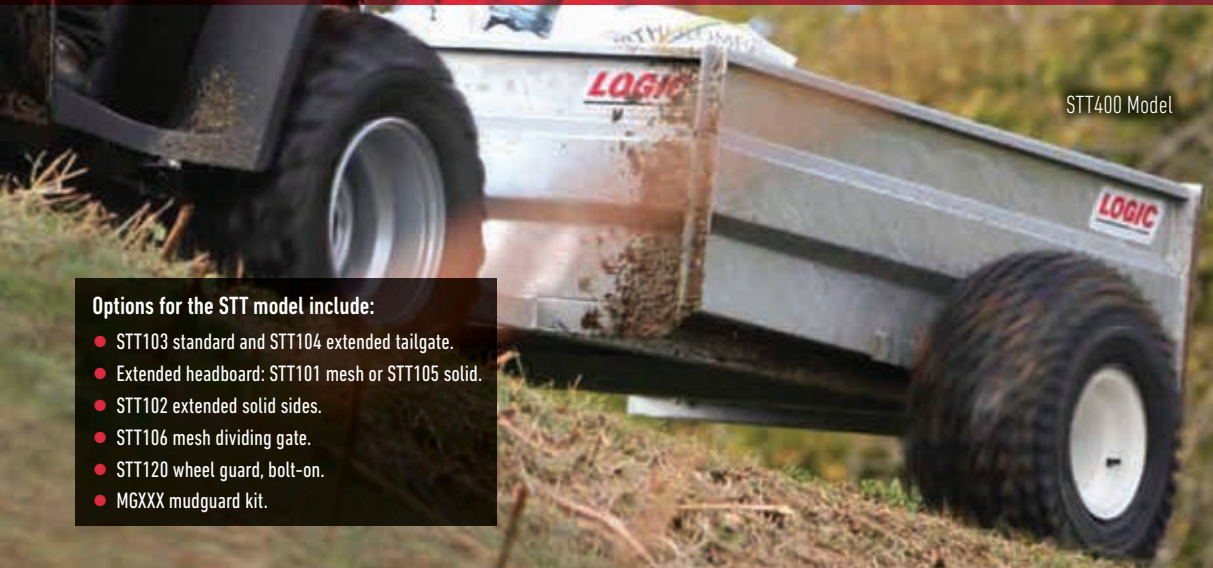
Videos available online

This symbol indicates a video of the product in action is available on our website at LogicToday.co.uk

| | | |
|---|---|-------|
| Mowers / Toppers | MFT Scrub Buster Flail Mower / Topper | 25 |
| | MFP Flail Mower / Topper | 26 |
| | TRM Rotary Mower / Topper | 27 |
| Sweeper Collectors | MSP120 Sweeper Collector | 28/29 |
| Seed Harvesters | MSH420 Seed Harvester | 30 |
| | MSH320 Seed Harvester | 31 |
| Front Mounted Equipment | System 20 - ATV use | 32 |
| | System 20 - UTV use | 33 |
| Electro Broadcasters, Spreaders /Seeders | EBC-TFL Electro Broadcasters | 34/35 |
| | Ground Driven Spreaders LDS Range | 36 |
| | Engine Driven Spreaders, System 40 | 37 |
| Salt Spreaders | Ground Driven Salt Spreaders | 38 |
| | Power Driven Salt Spreaders | 39/41 |
| | De-Icing and Anti-Icing Mounted Spreaders | 42 |
| | De-Icing and Anti-Icing Sprayers | 42 |
| Accessories | Safety Helmets and Handlebar Muffs | 43 |
| | Safety, Comfort and Storage | 44 |
| | Grips, Gun Boot and Basket | 45 |
| | Security and General | 46 |
| | Winches, Wheels and Components | 47 |

TRAILERS

Logic trailers were the first products to become the 'Trademark' of the company. The design continues to stand the test of time using innovative manufacturing techniques which embody a unique balance of strength with minimum unladen weight, thereby greatly improving the fuel efficiency of the towing vehicle. Particular attention has been focused on high quality components which will equally provide longevity and ease of use. Indeed, many of the first Logic trailers built in the mid 1970s are still being used today!



STT400 Model

Options for the STT model include:

- STT103 standard and STT104 extended tailgate.
- Extended headboard: STT101 mesh or STT105 solid.
- STT102 extended solid sides.
- STT106 mesh dividing gate.
- STT120 wheel guard, bolt-on.
- MGXXX mudguard kit.

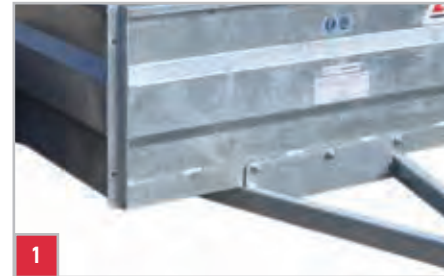
Why buy a Logic trailer?...

Because... all Logic trailers feature...

- ▶ All-welded monocoque construction to provide maximum strength with minimum unladen weight.
- ▶ Galvanised for long term protection.
- ▶ Swivel hitch for Health & Safety compliance.
- ▶ Bolt-in stub axles for ease of replacement.
- ▶ Bead-lock wheel rims for added safety.
- ▶ Top quality wheels and tyres.
- ▶ Unique balance of strength to unladen weight for longevity and economy.

▶ STT MODEL BODY SIZE 1500 x 1000 x 380mm

The STT model is a strong, general purpose trailer for all manner of uses, including carrying livestock when fitted with high sides.



1

Quality hot dipped galvanising provides the best protection for metalwork rust prevention, ensuring a lifetime of trouble free use.



2

50mm swivel ball hitch provides a robust, safe coupling with articulation for travelling over rough ground. This is a recommendation by the Health & Safety Executive. Other hitch types such as clevis, 40mm ring, etc. are available.



STT400 with STT103 standard tailgate.

3

4

2



3

Bead-lock wheel rims provide additional security for tyre to rim adhesion, particularly as these tyres operate at low pressure.



4

Bolt-in stub axles allow easy replacement when the time comes. This method ensures the galvanising protection is not disturbed. These trailers are designed to last a long time!



▶ SST RANGE BODY SIZE 1500 / 1800 x 1000 x 870mm

The SST models are Logic's flagship off-road range, tried and tested over decades. Now with 1500 or 1800mm body lengths, ideal for livestock and general work, they feature maximum strength with minimum unladen weight for long-term endurance and effortless towing.

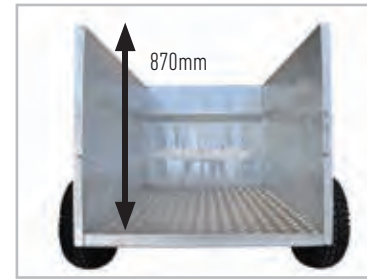


SST407TP model, 1500mm long with alloy tread plate floor, side-hinged mesh tailgate and 22x11-12 wheels and tyres.

'The perfect partner for an ATV'



'A' frame drawbar provides stability and strength without any significant loss of turning circle.



Top quality panel sides provide maximum strength without excessive weight and a height of 870mm to ensure there is little chance of livestock jumping out.



All-welded monocoque construction with aluminium 'tread plate' floor for safety, lighter weight benefits and easy cleaning for bio-security purposes.



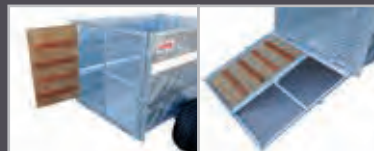
Optional STT106 mesh dividing gate kit (above). The standard 1500mm or 1800mm long SST can be separated into three compartments. These gates can be removed in seconds or parked flush against the sides to maximise the internal space.



Optional tyres include WT801 25 x10-12 (above left) for use with UTVs, 4x4s, etc. or WT500 22 x11-8 tyre (above right).



Optional - MGXXX mudguard kit to protect animals and operator from flying mud. Various sizes to suit wheel options.



Optional STT108 half mesh / half side-hinged door ramp tailgate.



STT104 - optional drop down ramp rear door.



SST457TATP tandem axle model, 1800mm long including side hinged mesh tailgate

This tandem axle facility is useful on rough ground where every bump is evened out and especially when crossing a ditch or hole when carrying livestock. The easy carriage reduces stress on the animals and trailer, ensuring the life of the trailer is extended. In more extreme ground conditions, the wheel will flip over to climb out of a hole.

▶ OXR RANGE BODY SIZE 2250 x 1310 x 300mm

This larger range of trailers is suitable for UTVs, the largest ATVs and 4x4s to carry livestock or bulky materials. The sides can be extended with optional sides kits of mesh or solid panels to 900mm high.



OXR400TA including tandem axle, seen here with optional XT105 solid headboard, XT205 solid extension sides and XT106 mesh ramp tailgate.

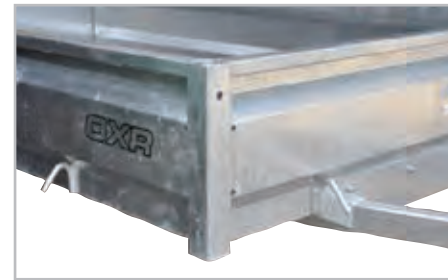
Options for the OXR models include...

- XT103 standard metal tailgate 300mm high, XT106 mesh ramp, XT108 half mesh / half side-hinged door ramp and XT116 metal loading ramp tailgate.
- XT101 ladder rack.
- XT105 extended solid headboard.
- Extended sides XT205 solid or XT202 mesh.
- STT120 wheel guard bolt-on, for single axle models only.
- MGXXX mudguard kit, for single axle models only.

OXR800 model (right) including larger 25 x 10-12 wheels and tyres, fitted with optional XT101 ladder rack and XT103 tailgate. This is a very useful trailer for larger ATVs, UTVs and 4x4 vehicles, providing a large carrying area suitable for a wide range of cargos. As well as the built-in monocoque strength, it features a quality phenolic resin coated ply floor for durability and long life.



OXR800 model fitted with optional XT105 solid headboard, XT202 drop down mesh sides kit, XT106 mesh ramp tailgate and XT202-10A support wire kit (right).



Strong monocoque construction with rope hooks and high quality galvanising for long life protection.



Bolt-in stub axle to allow easy maintenance or replacement when the time comes, without disturbing the galvanising protection.



Swivel hitch - bolt-on, to permit fitting in one of 3 positions to match the towing vehicle.



OXR400TA fitted with optional XT105 headboard, XT205 solid sides, XT109 livestock divider gates and XT108 half mesh/half hinged door ramp tailgate.

▶ LBT BALE TRAILER

The Logic LBT bale trailer with its unique dual pivot system has been designed to self-load, carry and unload bales of straw, hay and haylage. Maximum load 600kg.

LBT100 with galvanised chassis, swivel hitch and quality WT831 23 x 10.5-12 low ground pressure wheels.



Geared winch (left) enables effortless lifting and controlled unloading.

Ideal for livestock farms or equestrian units where one person can safely carry bales, towed by any suitable vehicle.

It's as simple as this series of easy steps...



1 Back up to bale, secure strap



2 Secure the winch strap



3 Winch the bale onto the chassis



4 Lock the cradle onto the chassis



5 Drive to the offloading site



6 Secure the unloading strap



7 Release lock and start to winch



8 Reach balance point, push bale



9 Remove straps, job done.

▶ TIPPING AND GENERAL TRAILERS

Logic have a trailer to suit most purposes. Our tipping trailers are tapered to ensure any load can be easily removed.



TGT400 tipping trailer 1500 x 1000 x 800mm, spring assisted with tapered body for easy emptying. Ideal for stable manure, grass clippings or any bulky material. This trailer comes complete with a standard high tailgate (as shown on the TST400 tipping trailer, below left).



Spring assisted tipping mechanism.



STT400 trailer 1500 x 1000 x 380mm with STT103 tailgate.



UET400 uni-built trailer 1500 x 1000mm, low or high side options available.



DST400 flat bed trailer (left) 1970 x 1400mm with standard ladder rack, seen here with optional DST103 300mm drop side kit. This trailer has a huge carrying area suitable for bags or bales with an easy loading height. Optional DST106 mesh sides and rear door extension kit and DST105 solid panel headboard to 800mm are available (below).



TST400 tipping trailer 1500 x 1000 x 500mm tapered body with lower sides for easy access. Features include a tailgate which can double as a loading ramp. Options include a RT710-01 jockey wheel and RT710-02 prop stands.



Optional WT510 turf tyres (right) offer non-marking tyres for use on delicate grass surfaces.

SDT400 tipping dump trailer 1500 x 1000 x 400mm. All steel heavy duty tipping trailer. Designed for hard work - very simple tipping system, ideal for stones, bricks, logs, etc.



SMT120 1500 x 1160mm x 500mm. A compact, stepped monocoque body with tremendous strength, narrow overall width and low centre of gravity. Ideal for gamekeeping and forestry or anywhere with restricted width access.



▶ FORESTRY TRAILERS

Low ground pressure compact extraction trailers designed to work in confined areas, minimising damage to the ground and surrounding areas.

THT400



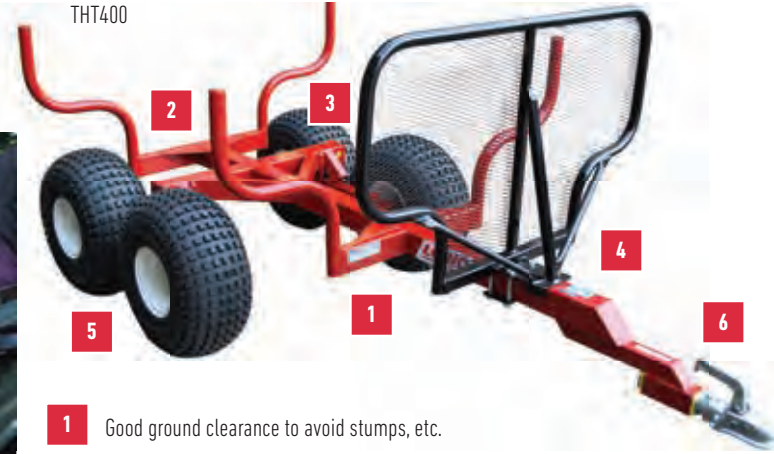
THT400 timber hauler with tandem axle and design features to provide a strong compact unit with easy towing in an often difficult environment. Ideal for estates, private woodlands and forestry contractors.

THT200



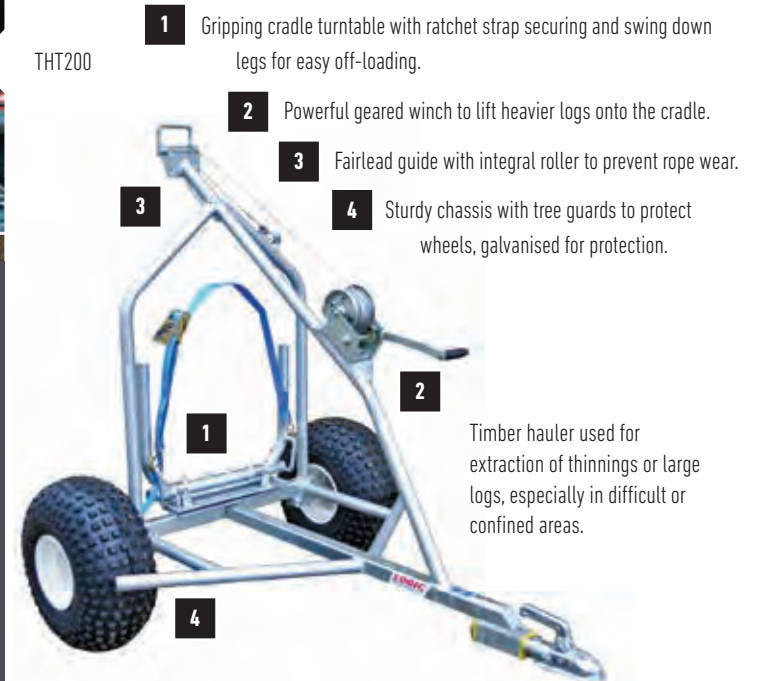
PB800 pole bogie used with an ATV, UTV, Land Rover or similar vehicle, can transport difficult objects like long poles with ease. Its design features adjustable gripping chain and removable drawbar to handle practically any length of pole or pipe, etc. Easy to attach with no other equipment required.

THT400



- 1 Good ground clearance to avoid stumps, etc.
- 2 Very strong chassis to cope with arduous work.
- 3 Pivoting tandem axle for smooth travel in poor conditions.
- 4 Movable headboard to accommodate different lengths.
- 5 Quality wheels and tyres for tough conditions.
- 6 Swivel hitch drawbar for added safety together with Health & Safety compliance.

THT200



- 1 Gripping cradle turntable with ratchet strap securing and swing down legs for easy off-loading.
- 2 Powerful geared winch to lift heavier logs onto the cradle.
- 3 Fairlead guide with integral roller to prevent rope wear.
- 4 Sturdy chassis with tree guards to protect wheels, galvanised for protection.

Timber hauler used for extraction of thinnings or large logs, especially in difficult or confined areas.

▶ TRAILERS ROAD LEGAL – XRT RANGE BODY SIZE 2250 X 1310 X 300mm

Logic road legal trailers suit a wide range of applications. All models feature maximum strength with minimum unladen weight. All comply with 'European Community Whole Vehicle Type Approval' (ECWVTA) regulations.



XRT740 with 195x60-R14 wheels and tyres and optional XT116 ramp tailgate, XT101 ladder rack.



1 Optional XT116 metal loading ramp/tailgate, for loading ATVs, garden machinery, etc.



2 Protected light cluster with inbuilt triangle and lenses.



3 Standard Al-Ko axle with progressive rubber suspension giving an excellent smooth, quiet ride.



1 2 3 4 Optional lockable coupling with fitting kit, locking barrel and keys.



XRT740 with 195x60-R14 wheels and tyres, showing optional XT202 mesh hinged sides, XT202-10A wire kit and XT106 mesh ramp tailgate. Ideal for bulky loads like these straw bales.



XRT630 with 165x13 wheels and tyres with optional XT105 extension panel headboard, XT205 extension panel sides and XT106 mesh tailgate to give 900mm height.



XRT610E with 20.5x8-10 wheels and tyres with optional XT106 mesh ramp tailgate and RT710-02 rear prop stands. Ideal for transporting an ATV or garden tractor.



4 Attachment to the towing vehicle features a high quality coupling, heavy duty restraining cable, 7 or 13 pin electrical plug with storage socket and drawbar skid.



Other options include a spare wheel with WB103 mounting bracket and RT710-01 jockey wheel.

▶ TRAILERS ROAD LEGAL – VT, SXR MODELS BODY SIZE 2995 X 1750 / 1500 X 300mm (1300KG GROSS)

These large trailers are perfect for transporting utility vehicles with the added benefit of being able to be towed behind the vehicle for off-road use. Standard features include overrun brakes, heavy duty loading ramp, 13 pin electrics (adaptor supplied to reduce to 7 pin), rear prop stands and jockey wheel. Options include extension mesh or solid sides and headboard.



VT726 transporter trailer 2995x1750x300mm, 1300kg gross with 195x70-R14 wheels and tyres, heavy duty loading ramp, jockey wheel and rear prop stands.



SXR726BT beaver tail trailer 2995x1500x300mm, 1300kg gross. For ATVs, UTVs, golf cars, ride-on lawnmowers, etc.



VT726 seen here with optional VT202 mesh extension sides and VT101 mesh headboard to 900mm high.



Optional WB103 spare wheel mounting bracket with WT760 195x70-14 spare wheel.



1

Prop stands to support the trailer when loading vehicles.



2

Monoque construction with 'A' frame drawbar, Al-Ko suspension, one piece axle (1300kg) featuring rubber progressive action with excellent dampening. All protected with hot dipped galvanising for long life.



3

2

1

4



7 pin / 13 pin connection adaptors.



3

Protected light cluster with inbuilt triangle, lenses and marker lights.



4

Overrun brakes with safety breakaway cable, handbrake and jockey wheel.

FEEDERS

Logic has been at the forefront of design and manufacturing of innovative equipment to improve the working life of stockpersons. Feeders are a good example and feature ideas developed from years of practical experience working with sheep, cattle, deer, camelids, pigs, poultry and game birds. Our products are designed to feed quickly and accurately to improve productivity, relieve stress and release more time for stockmanship.

The Logic Multi-Feeder enables you to...

- Feed livestock quickly.
- Drop feed at the best spacing to avoid food trampling.
- Keep livestock apart and to eat without stress.



Model LMF870K including 25x10-12 wheels and tyres, with tonneau cover, sheep fender and mudguards.

“Still setting the standards”

► LIVESTOCK MULTI-FEEDER

The Logic Multi-Feeder was developed to save time and improve the profitability of livestock enterprises. It was originally designed for sheep but the versatility of the design allows other types of livestock to enjoy the same benefits. Feeding can be carried out quickly with hardly any disturbance in the animal group. This is a huge benefit when sheep are heavily in lamb or livestock are in a sheltered area during poor weather.



Model LMF570K including 22x11-8 wheels and tyres with tonneau cover, sheep fender and mudguards.



Key Features

- Will handle nuts, rolls, pencils, cobs as well as most home mixes.
- 356 litre hopper capacity.
- Control box for remote operation, sited close to the driver to enable use with UTVs and 4x4s.
- Strong all-welded construction - light towing weight.
- Quality low ground pressure 22x11-8 or 25x10-12 wheels / tyres with bead-lock rims.
- Resettable drop counter.
- Simple, robust electrical mechanism with no mechanical drive system to impede towing.
- Excellent ground clearance.
- Galvanised protection, for long life.
- Swivel hitch for added safety.

▶ LMF MULTI-FEEDER

Options...

- LMF101 tonneau cover.
- LMF103 mudguards.
- LMF102 livestock fender.
- LMF108 extended hopper kit to increase capacity to 625 litres.
- LMF109 tonneau cover for LMF108 hopper extension.
- LMF112 hard-top bale rack.
- WT801 25x10-12 wheels with bead-lock rims.

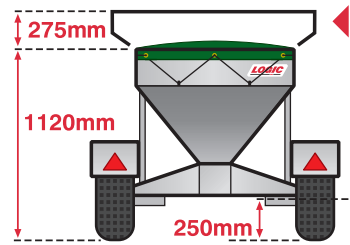


The control box can be mounted in a favourable position close to the driver. Shutter operation can be stopped and started without losing the drop count, allowing the operator to make the best use of suitable ground. The digital display automatically shuts down 15 minutes after last use preventing unnecessary drain on the vehicle battery.

Once the calibration has been completed, which takes about 5 minutes, the operator knows how much is being dropped in each pile. Thereafter the drop counter will record how many drops have been given in any one batch to calculate the total amount fed. After that it is a question of maintaining a forward speed that will give the required spacing between heaps to suit the type of livestock being fed.



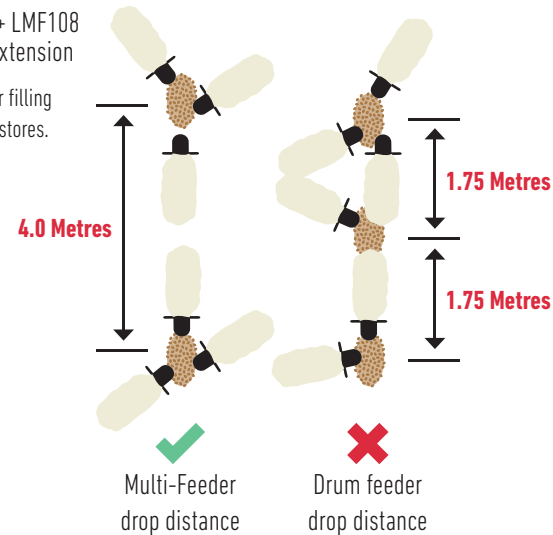
Model LMF570 including 22x11x8 wheels and tyres with optional LMF101 tonneau cover, LMF102 sheep fender and LMF103 mudguards.



Multi-Feeder ground clearance (Model LMF570)

Ground clearance is important and is the same as a trailer, with no components below axle height that could be damaged by rocks, mud and snow.

◀ LMF870 + LMF108 hopper extension
Heights for filling from bulk stores.



LMF570TA tandem axle model (above) with optional LMF108 hopper extension and LMF109 tonneau cover. This wheel layout improves the smoothness of travel and stability over rough ground. Seen here with optional extension sides to increase capacity to 625 litres.



LMF112 hard top bale rack option.



Model LMF610R with suspension axles, road wheels, lighting board and optional LMF101 tonneau cover.



Part of a large flock of sheep feeding typically as the Logic Multi-Feeder is used. This demonstrates how the sheep naturally feed head to head in small groups with plenty of space between each pile of food.

▶ GAME FEEDER

Whenever game needs to be fed with flowable feed, such as grains or pellets, Logic game feeders provide the perfect solution. Two model types are available either on board, which is mounted on an ATV/UTV or a trailed version for larger enterprises. All Logic game feeders incorporate an output shut-off facility ensuring feed does not drop when not in operation. This keeps valuable birds in the right areas and ensures food does not spill when travelling on roads.

LGF850 trailed game feeder with optional LMF103 mudguards and LMF101 tonneau cover.



LGF850 trailed game feeder has a 340 litre hopper capacity and 25x10-12 wheels and tyres. It features a robust 12v electrical mechanism with remote ON/OFF control box and stainless steel disc plate which gives a 3.0 metre spread width. This machine is an all-welded one piece monocoque construction which maximises the strength whilst keeping it light to tow. Options of LMF103 mudguards, LMF101 tonneau cover and LMF108 extension sides to 610 litres are available.



EBC-TSS300PHT trailed version with optional LMF101 tonneau cover and EBC-TS302 mudguards kit.

These two models have a 12v DC, 2 speed disc drive with remote ON/OFF control box for operation from the driver's seat. Their capacity is 300 litres with a stainless steel hopper, metering plate and disc. N.B. the EBC-TS range is also available with 85 and 130 litre hoppers.



EBC-TSS300PH de-mount model with optional LMF101 tonneau cover.



EBC-BDS12PL broadcasters ideal for feeding game birds and spreading seed mixtures for the establishment of game cover crops. EBC-BD12P model fitted with powered ON/OFF available.



EBC-BD12 manual shut-off model for the rear carrier of an ATV. Other models include wired remote control for using on larger vehicles, shown here with EBC112 ATV mounting kit.

▶ POULTRY CHICK FEEDER

The Logic Chick Feeder has been developed to lay out feed in broiler and other poultry houses. This process speeds up the changeover between batches whilst allowing maximum drying time and rest period after cleaning, improving throughput and profitability. It features an integrated adjustable paper holder which dispenses paper whilst laying out feed at the same time. It is remotely controlled from the driver's seat and has a capacity of 356 litres which can be increased to 625 litres with extension sides.

LCF160 chick feeder with optional LMF108 hopper extension and LMF109 tonneau cover.



This basic LCF160 lays out approximately 1500kg of feed on 6 rows of paper in this broiler house in 5 minutes (plus filling time) a fraction of the time of previous methods.

BOWSERS

Logic bowzers provide a quick and easy way to get liquid feeds or fresh water to the location of your choice. Paddocks without water can be brought into use and a bowzer is ideal for transporting water to fenced off sections, for controlled grazing during the summer or for supplying liquid feed to outlying stock in the winter.

▶ 270 litre TRAILED, DECK MOUNTED, 3 POINT LINKAGE

These 270 litre bowzers are built using high quality components and can be towed, fitted to a tractor or mounted into a UTV, pick-up or trailer. These products are designed to give years of good service.



DMB300 (above) seen here mounted in a trailer allowing space for other materials or feeds. It can be towed by any suitable vehicle and will also fit into cargo beds of a UTV or pick-up.



SLB400 with low ground pressure 22 x11-8 wheels for use on soft ground.



TPB300 for mounting on the rear linkage of any suitable tractor. The parking skid allows easy attachment from storage.



DMB300 has overall dimensions of 1000 x 600 x 800mm high and features a robust frame with cushion pads to provide a good non-slip location on various carrying platforms.



Ideal for the rear of a UTV or 4x4 allowing space for other materials or feeds.

▶ 600 litre TRAILED-GRAVITY OR PUMP DISCHARGE optional manege water or spray kits

600 litre models are ideal for use with UTVs, 4x4s or other suitable vehicles where a larger payload can be handled with safety. The model options cater for a wide variety of uses, from water trough replenishment to hanging basket maintenance and manege watering to keep down dust, a benefit that could be repeated in a number of situations.



SLB600 is suitable for larger towing vehicles and features gravity discharge, with 23 x10.5 - 12 wheels and tyres. SLB620H has a Honda 2" diameter pump for discharging into elevated tanks and troughs. With a powered pump there is also an optional 5.0 metre suction hose kit which allows you to 'self-fill' the bowzer from any available fresh water source.



SLB620HM this option is the same as SLB620H with the addition of a manege watering kit, ideal for 'damping down' arenas when it gets hot and dusty in the summer months.

Key Features

- ▶ 270 litre capacity, 1.8 metre 2" diameter outlet hose.
- ▶ 600 litre capacity, 3.5 metre 2" diameter outlet hose.
- ▶ Strong, rotationally moulded translucent tank.
- ▶ 1/4 turn tap for fast emptying.
- ▶ Large diameter ventilated lid for easy filling.
- ▶ Strong chassis and mounting frame fitted with low ground pressure wheels and tyres (towed models).
- ▶ 50mm ball, swivel hitch coupling (towed models).



SLB610HB (above) - this model is supplied with a Honda 1" diameter pump, 5.0 metres of outlet hose and basket watering nozzle kit, perfect for looking after many hanging baskets throughout the growing season.

SLB620H and SLB400 Bowzers (right) showing the comparison of size, chassis and wheel specification.

The 600 litre model should be towed by a large ATV, UTV, 4x4 or similar type vehicle.



SLB620H—600 litres capacity.

SLB400—270 litres capacity.

SPRAYERS

Logic have a long pedigree of sprayer manufacture, being at the forefront of advanced sprayer development in the early 1980s. Logic sprayers have always led with innovative yet simple design features and market leading qualities of strength, ease of use and accuracy, designed for use over many years.



OBS610 front mounted 60 litre tank with ATV110 ratchet strap kit. Provides stability and greater capacity.

OBS690S with OBS102 2.0 metre boom, OBS112PH hose reel and hand lance.



OBS640S 60 litre capacity with 4.5 litre / min pump suitable for booms up to 2.0 metres wide. Seen here with OBS114, hand lance and 15.0 metre hose.



OBS134S /135S - 135 litre capacity suitable for up to 4.0 metre boom width. Ideal for larger ATVs, UTVs, 4x4s, etc. Seen here with OBS112PH 15.0 metre hose reel with hand lance and OBS101 1.5 metre boom.

OBS690S 60 litre capacity with 9.0 litre/min pump suitable for booms up to 3.0 metres wide - OBS104, seen in use here.

▶ ON BOARD SPRAYERS

Whether it's spraying arable headlands, spot control in grassland or around buildings and sheds, there will always be a use for an on board sprayer on farms, small holdings, equestrian yards, estates, etc.

Key Features

- ▶ Tanks are rotationally moulded for strength and durability in 4 sizes 60/135/270/600 litres.
- ▶ Pumps are 'Shurflo' 12v, 3 models 4.5, 9.0 and 14.4 litre/min. Petrol engine pumps are 'Honda' high output units.
- ▶ Booms are strong with break-back devices in 4 widths, 1.5, 2.0, 3.0 and 4.0 metres.
- ▶ Spraylines are made of plastic or stainless steel. Other boom metalwork is electroplated to resist corrosion.
- ▶ Booms can be quickly adjusted for correct nozzle to target height.

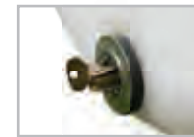
Model OBS690S Pressure control (right) and recirculation is easy to adjust.



Hand screw and 'R' clip location for easy boom height adjustment.



Optional ATV110 ratchet straps (above) for securing to flat carrying frames. (See accessories section.)



Drain plug to assist easy emptying of fluid.



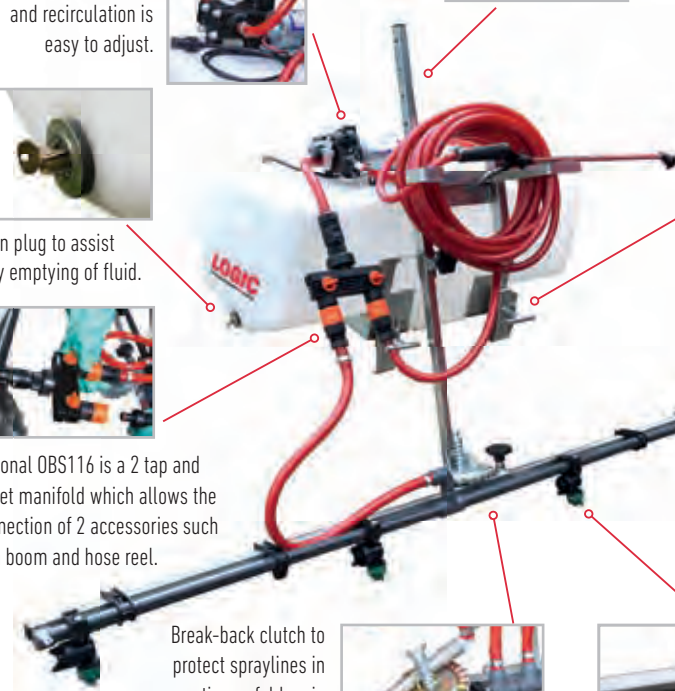
Quick, secure attachment with 'T' bolts and bracket plates.



Optional OBS116 is a 2 tap and outlet manifold which allows the connection of 2 accessories such as a boom and hose reel.



Hedgerow nozzle turned on /off by turning through 90 degrees, ideal for walls, curbs, under trees, fence lines, etc.



Break-back clutch to protect spraylines in operation or fold up in transport mode.



Anti-drip nozzle holders feature ON/OFF by simply turning the valve control. Ideal for specific spray patterns.



▶ DECK MOUNTED SPRAYERS

DMS models are designed to be quickly mounted onto a UTV cargo bed or trailer to provide a large capacity lightweight sprayer. This 270 litre capacity tank combination is ideal for this size of vehicle which offers a larger capacity for covering more ground whilst maintaining low ground pressure.



DMS397SE model featuring a 14.4 litre/min pump with boom bracket, wiring harness and remote electric ON/OFF control to allow operation from the driver's seat. Shown here with an OBS108 4.0 metre boom.



Trailer mounted is an easy option for this sprayer, which provides plenty of flexibility. It can be towed by any suitable vehicle and allows carrying of additional equipment.



DMS390S with optional DMS303 boom mounting bracket fitted to the side of the frame to allow fitting into smaller UTV cargo beds or other carrying systems, shown here with OBS102 2.0 metre boom.



Large diameter vented lid with generous filter enables fast filling, especially when pumped from a clean water source.



DMS390S with optional OBS104 3.0 metre boom.

Optional electric ON/OFF control on models with pressure control - for remote use with UTVs, 4x4s, etc.



▶ 3 POINT LINKAGE MODELS

3 Point linkage mounting allows easy fitting to smaller tractors, etc. This unit has the same specification as the deck mounted models in terms of agitation, pump output and boom widths up to 3.0 metres.

TPS390SE features a very strong 'A' frame 3 point mounting with cradle and tank securing system.



Perfect for small tractors with 'Cat 1' linkages like this compact tractor mower unit. The skid unit sets the sprayer at a good height for dismantling and storage.



TPL115 mounting frame model features a platform suitable for the OBS135 and OBS60 series sprayers to be fitted. The same frame can be used for an electro broadcaster or similar 12v DC powered unit.

▶ TRAILED SPRAYERS

These compact sprayers have all the features of a conventional sprayer with the economy of a smaller capacity and the ability to be used with a wide range of suitable vehicles. Ideal for small to medium sized areas or for headland treatments on much larger areas.



TS400S trailed sprayer with 270 litre capacity tank and a choice of 4.5, 9.0 or 14.4 litres/min pumps to be used with optional booms of 1.5 metres to 4.0 metres, single broadcast nozzle, hand lance and 15.0 metre hose reel.



ATV130 spraying protective clothing kit in use (above) to comply with Health & Safety Executive guidelines. (See accessories section.)



TS500/600 based on the well proven Hardi sprayer, with self-levelling booms of 10.0 - 12.0 metre widths. These models are mounted in a sturdy chassis with an engine driven pump providing a stable low ground pressure unit. The sprayer can be mounted on a tractor or as a front tank with adaptor kit for larger sprayers.



TS660 in transport position

TS660/680 sprayers feature the same strong, rotationally moulded, translucent, polyethylene 600 litre tank, mounted on a sturdy 'A' frame chassis with low ground pressure 23 x 10.5-12 wheels and tyres. Output is supplied from a Honda engine, 25 litre/min diaphragm pump controlled by remote electric ON/OFF and manual pressure regulation. A 15 litre clean water tank is mounted to comply with Health & Safety regulations.

These models have a self-levelling 6.0 or 8.0 metre boom with winch for manual raise and lower. They can be towed by any suitable vehicle and are ideal for large field margins, game cover strips or paddocks. Inset picture shows folded booms in transport position and parking jack.



Adjustable break-back clutch for boom safety and protection.



Pressure control and agitation is easily accessed.



Hedgerow nozzle turned through 90 degrees. Other jet bodies can be switched off individually to create a desired spray width.



TS400S

The choice of 12v pumps produces 9.0 or 14.4 litre/min at 3 bar (40psi).



TS625 sprayer is a boomless model using one or two Hypro XT020 broadcast nozzles to produce spray widths of up to 11.0 metres with application rates up to 285 litres/ha. Ideal for spraying areas where a conventional boom is not practical.



WEED WIPERS

By applying chemical only to taller targeted plants, leaving grass and most importantly clover, unaffected, Contact 2000 is able to deliver excellent results using only a fraction of the chemical required for conventional spraying of the same area.

The Logic Contact 2000 range is the most advanced and efficient weed wiper system available.



Standard control box for hands-free operation.



Seen here treating nettles and thistles saving valuable clover and grass. The brush section build up allows treatment on slopes (above right) without the danger of run-off, common in some carpet type systems.

▶ CONTACT 2000

These units have been designed to be towed behind an ATV, UTV or other suitable farm vehicle. The chemical supply pump is powered by the towing vehicle's 12v electrics. A unique, contra-rotating brush ensures that each weed plant is liberally coated with chemical, ensuring rapid and effective weed control.



Height adjustment is spring-assisted to allow the machine to be quickly and easily set to the correct working height for the weed infestation being treated.



The robust 'swan neck' drawbar reduces drag in dense foliage. It can be easily moved to provide an offset facility and houses the large, in-line filter.



CTF250DSK



The unique nature of this Logic patented brush is fundamental to the success of the system. It is a mixture of absorbent natural fibres and synthetic fibres in interlocking rings of bristles mounted on a central shaft with a slight gap between each of them to allow plants to 'comb' through, delivering a high dose of chemical in one pass.



The contra-rotating brush is ground driven from the wheel using a segmented 'V' belt housed under a robust, protective cover. Low ground pressure tyres on bead-lock rims allow for use in soft, wet ground and provide suspension for the unit when working in rough conditions.

▶ CONTACT 2000 – RUSH AND BRACKEN CONTROL



Hands-free operation without any complicated electrics or sensors, this easy to use control box allows the operator to select the required rate for the level of weed infestation being treated, ensuring the lowest possible usage of chemical to achieve the desired results. An override button allows the operator to instantly increase the amount of chemical delivered should there be a dense patch of weeds in an otherwise sparse infestation.



The brush core is especially designed to prevent chemical passing along the length of the brush when used on side slopes.

Before - June 2017



Rushes can be treated from April onwards with the best results before seeding. However, they can be treated right up to the first frost.

After - September 2018



15 months later this is the scene. The removal of rush and coarse grass has allowed finer grasses to re-establish, providing good long term grazing.

CTM600W Grassland model, 6.0 metre working width as used to treat the before/after field above.



Treating bracken early offers the operator more safety by avoiding obstacles hidden by a full stand. Shown here using glyphosate in August.

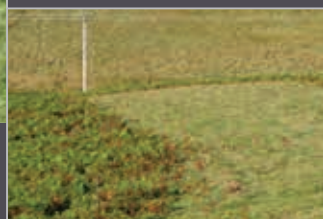


Before - Mid August

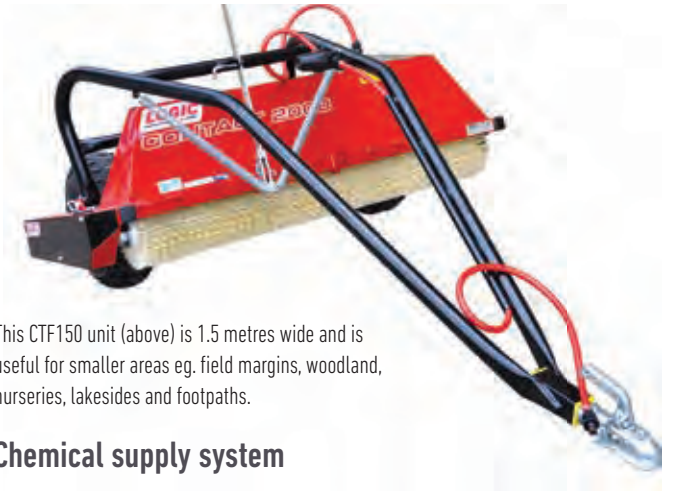


Glyphosate applied at a dilution rate of 20:1 with a work rate of up to 2.8Ha per hour.

After - 12 months later



12 months later - land restored, grass and clover thriving, fewer ticks.



This CTF150 unit (above) is 1.5 metres wide and is useful for smaller areas eg. field margins, woodland, nurseries, lakesides and footpaths.

Chemical supply system

- ▶ CTF640S is a 60 litre tank and pump, suitable for 1.5 metre and 2.5 metre Contact 2000 models and is part of the specification on DSK models.
- ▶ CTF908 is a drawbar mounting kit designed for the 60 litre tank (supplied with DSK models).
- ▶ 2 and 3 unit gang systems usually combine with larger sprayer tank and pump units from the OBS range eg. OBS135S or DMS390S, to allow more capacity for larger areas. This is dependent on what type and size of vehicle is being used.



LBM100 bout marker is a very useful option especially where line of sight is obscured. This unit is ground driven from the Contact 2000 drive system and drops foam every few seconds. This makes an easy marker to follow to prevent overlapping or missing pieces.

◀ Foam drop



▶ TRACTOR MOUNTED – CTM MODELS

These Contact 2000 models are designed for customers who prefer to use a tractor for weed wiping, with all models using the tractor's hydraulics and mounted to either the rear or front three point linkage. The chemical supply pump is powered by the tractor's 12v electrical system.

CTM600W 6m working width, hydraulic folding to 2.5m for transport. Work rates of 5 – 8 Ha per hour are achievable, depending on forward speed and ground conditions.



The two outer wings have a resettable, hydraulic break-back facility to protect the machine against damage from unforeseen obstacles.



The brush on all tractor mounted models is driven by the hydraulic motor which is easily adjusted using a simple flow control, allowing the operator to set the optimum rotational speed.



CTM250TSK in a conventional setup.



Rear facing setup for wiping in reverse.



Simple height adjustment gives wiping heights of 400mm down to 50mm. Seen here with optional bout marker fitted to help line of sight and prevention of misses.



Hydraulic 'float' setting allows the unit to follow field contours.



Positioning the supplied control box in the cab close to the driver allows any adjustments to chemical flow rate to be carried out whilst on the move.



Alternative setup on a front mounting linkage.



Blackgrass being treated a few centimeters above the crop



Grassland model CTM600W seen here working fully suspended for cereal work controlling blackgrass, where great results have been achieved. This is one example of targeted weed control using a fraction of conventional chemical rates.



Arable model working in perfect row crop conditions, controlling volunteers in these vegetable beds.



Arable model CTM600 (above) is fully suspended for row-crop work, to enable the treatment of weed beet, volunteer rape, fat hen in vegetable crops and volunteer potatoes in carrots, etc.

HARROWS, ROLLERS, AERATORS & GRADERS

The basic process of harrowing grassland has many benefits. The removal of dead thatch from the sward allows light, air, water and nutrients down to root level, stimulating growth and health of the grass. Logic has a range of harrows to cover all options.

LPH200 PRO-HARROW



Adjustment of the drawbar top link ensures the Pro-Harrow / Super-Harrow can be set up to work level with any suitable towing vehicle.

Pro-Harrow Key Features

- ▶ Manual raise/lower.
- ▶ 3-position lever to adjust action.
- ▶ 34 genuine Einbock™ tines, in 3 rows.
- ▶ Adjustable drawbar for multi vehicle use.

The Logic LPH200 Pro-Harrow is 2 metres wide and can be towed by an ATV or any other suitable vehicle. It features 34 genuine Einbock™ spring tines to provide a mild or more aggressive contact with the surface which is being maintained. Pro-Harrow is in its element when pulling out dead thatch from grass paddocks or rebinding the materials of all weather surfaces. The Pro-Harrow frame is light but exceptionally strong and the harrow can be taken in and out of work using a manual lever. Inboard wheels allow easy towing and manoeuvring in fields and working right up to fence lines.

▶ TINE HARROWS

Logic Tine Harrows are ideal for harrowing grassland at various times in the year. Early scarifying really gets the grass growing and if reseeding with a broadcaster, these harrows will prepare a good seedbed. Other surfaces like all weather gallops benefit from this spring tine action too.

LSH200P SUPER-HARROW



The control box is supplied with ample cable for positioning close to the operator's driving position. This allows it to be used with many types of towing vehicle.

The Logic Super Harrow is 2 metres wide and has 52 Einbock™ spring tines in 4 rows with 3 adjustable settings. This design provides superior harrowing performance on all surfaces. The Super Harrow frame incorporates a 12v electric ram, which means the implement can be raised and lowered easily. Its unique 'float' mechanism allows the harrow to work effectively on uneven ground. The tines are adjustable so that you can fine tune the harrow to perform different tasks, eg. simple harrowing through to regrading gallops.

Super-Harrow Key Features

- ▶ 12v actuator raise/lower with control box.
- ▶ 3-position lever to adjust action.
- ▶ 52 genuine Einbock™ tines, in 4 rows.
- ▶ Optional depth control.



Super Harrow depth control is easily adjusted to provide an accurate setting to suit the type of surface and incorporation requirements.

Super Harrow LSH200PD is available with depth control which allows the tines to be set at a consistent penetration depth. This feature provides the ability to prepare a surface to the optimum firmness for a desired riding discipline. An added advantage of this is that surfaces with a barrier membrane can be protected from damage.

▶ CHAIN HARROWS

These chain harrows are simple and economic drag units, ideal for levelling, scarifying and improving the health of paddocks.

Chain Harrows are available in 1.2 and 1.8 metre widths. They are made from 13mm high-carbon steel and have trail weights to minimise the bounce effect.



Model CH200

▶ BALLAST ROLLERS

BR150 Ballast Rollers (1.5 metre) or BR180 Ballast Rollers (1.8 metre) are perfect for levelling poached and soft ground or for use after reseeding worn areas.



Model BR150 1.5m wide

Ballast Rollers are very strong and feature a large 508mm diameter drum for easy towing.



Model BR180 1.8m wide



Model BR180 1.8m wide

Ballast Roller weight can be altered by adjusting the water content to suit ground conditions and towing vehicle (maximum gross weight 530kg/640kg). This optimises performance and safety especially when operating on sloping ground.

▶ AERATOR

LTA160 Terr-ator is a 1.6 metre wide, towed slitter to aerate soil, relieve compaction and improve drainage. It is beneficial not only on grazing paddocks but on footpaths, parkland and turf sports pitches, etc. Any sward showing signs of stress will be helped with the use of this implement.



Model LTA160

Terr-ator produces slits down to 140mm and works best behind a 4x4, ATV or similar towing vehicle.

Moving from transport to work mode is achieved by flipping the machine over 180 degrees using the drawbar.



Optional 22.5kg ballast weights can be added, to a maximum of 5 when required to help penetrate hard packed ground.



Operating width is 1.6 metres with 32 x 6mm high-carbon steel blades designed to penetrate the soil with as little effort as possible. The transport position naturally offers easy access for any maintenance, including greasing.

The slits created in this waterlogged sward improve the natural drainage, allowing air and nutrients down to root level, quickly improving the condition of the grass. In areas where constant pounding of horses hooves has caused compaction and capping, the Terr-ator will break up the surface allowing plant life to recover. This underrated piece of equipment will transform any ground especially heavily used areas such as gateways or sacrifice areas, etc. Several passes will also assist with preparation for reseeding by creating a tilth - when used in conjunction with a Logic harrow and electro-broadcaster this provides the best conditions for successful germination.

▶ SURFACE-PRO LEVELLER

LSP150 Surface-Pro with electric raise and lower is an easy to use conditioner to level and compact to the firmness required for your riding discipline, including on the latest wax composite surfaces. Its large low ground pressure wheels makes it easy to manoeuvre and attach to a range of towing vehicles. It features adjustment of spring tines, levelling board and roller to achieve the desired blending and firmness.



LSP150PP Surface-Pro with perimeter plough seen here in the parked position.

Electric raise and lower control box, mounted close to the operator.



Perimeter plough in use.

The perimeter plough model is very useful for pulling in material from the side boards to help maintain the outside track. When not in use, it is folded up to the integral parking bracket.



The spring tines can be easily adjusted by the simple hand lever, depending on the degree of aggression required.



Rear roller adjustment in combination with the levelling board to a position indicated by the scale, ensures a consistent set-up.

▶ PRO-GRADE SURFACE GRADER

PG250 Pro-Grade provides one-pass levelling to keep an arena in tip top condition, quickly and easily. It features a concave profiled blade that keeps surface material rolling along in front of the blade without spilling over the top. It has an easily unlocked swing back section to form the perimeter plough, is light to tow and has a height adjustable drawbar for different vehicle towing heights.



PG250T Pro-Grade with tine bar fitted, seen here with perimeter plough in use to pull in material from the side boards.

PG250 Pro-Grade provides quick and easy levelling of many types of surface. It features a perimeter plough to bring in material from the side of tracks or boards. It has low pressure tyres for all round capability and a raise and lower handle to lift the 2.5 metre blade clear of the ground for easy manoeuvring and transport as seen here below.



Options include a wheel track levelling kit (above) to enable one pass grading and a tine bar for rubber or bark surfaces, to level, agitate and reincorporate the surface.



Easily operated over centre lever raises the Pro-Grade for transporting then lowers it into the work position. Inset picture shows the depth adjustment jack to set the blade to the best working level in various surfaces.

MOWERS / TOPPERS

Logic MFT and MFP flail mowers are designed to cut heavier material when used with an ATV or UTV, etc. They are of exceptional build quality and are suitable for general paddock use, orchards, roadside verges, lawns, footpaths or creating fire breaks in heather.

MFT120B18 'Scrub Buster' model features triple belt drive for the rotor with manual engagement system.



The full width anti-scalping roller (above) protects the sward from scalping and allows cutting over kerbs, etc.



MFT120B18R wheels behind model, ideal for field margins, footpaths and bridleways, etc. The configuration allows cutting right up to the edge of the crop, boundary fence or wall and around trees, etc.

► MFT 'SCRUB BUSTER' FLAIL MOWER / TOPPER

The MFT 'Scrub Buster' range, fitted with 16 heavy duty hammer-head flails and 18hp 'V' twin engine is designed to manage the roughest of conditions whether it is cutting heather, roadside verges and brambles, game cover crops, rush, woodland rides or any other rough areas which need mowing/topping. However, it is equally comfortable topping paddock grass and carrying out any other general grass cutting.

Key Features

- ▶ 1.0 metre & 1.2 metre cutting widths available.
- ▶ Powerful 18hp Briggs & Stratton 'V' twin petrol engine, with electric start option.
- ▶ 16 Heavy duty hammer-head flails.
- ▶ Ignition kill switch for added safety.
- ▶ Height adjustable drawbar with offset facility.
- ▶ Anti-scalping roller.
- ▶ Wheels behind models for cutting closer to walls, fences, etc.
- ▶ Exceptionally strong rotor with heavy duty tube to cope with arduous work.



Heavy duty hammer-head flails capable of cutting through the toughest of vegetation.



Flotation wheels are a useful option for soft or rough ground and are always recommended when cutting heather, seen here (above) cutting fire breaks on an upland grouse moor.

▶ MFP FLAIL MOWER / TOPPER

The MFP flail mower range includes models with 1.2 metre and 1.5 metre cutting widths, all powered by Briggs and Stratton 'V' twin 16hp and 18hp engines. There is a choice of standard wheels or flotation wheels, positioned alongside the mower. Alternatively the wheels-behind model uses standard wheels positioned behind the mower which reduces the overall width and allows closer cutting to walls, fences, trees, etc. NB. The wheels-behind model significantly transfers more of the weight onto the drawbar so please ensure the towing vehicle is suitable.



MFP320B16

MFP mowers feature three belt drive with manual engagement.

There is a choice of blades which can be used on MFP models:
 A-General purpose, supplied as standard for most situations.
 B -Fine grass, for lawns and more formal areas.

If flails hit a rock or other solid obstacle, they deflect on their shackles, minimising damage. The cutting action chops up the material several times before it is ejected out of the back, where it quickly decomposes.



Drawbar lower link to permit deck levelling with any towing vehicle.



MFP320B16R wheels behind model for working in restricted areas and cutting close to walls, fences, around trees, etc.

Key Features

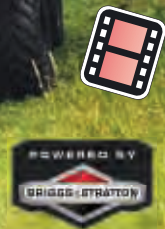
- ▶ 1.2 metre and 1.5 metre cutting widths available.
- ▶ Powerful 16hp and 18hp Briggs & Stratton 'V' twin petrol engines with an electric start option.
- ▶ 3 belt drive with manual engagement.
- ▶ Ignition kill switch for added safety.
- ▶ Height adjustable drawbar.
- ▶ Off settable drawbar.
- ▶ Anti-scalping roller.



The full width anti-scalping roller (above) protects the sward from scalping and allows cutting over kerbs.



MFP350B18 model with 1.5 metre cutting width and 18hp 'V' twin engine provides a high output unit suitable for UTV use and larger areas.



▶ TRM ROTARY MOWER / TOPPER

The Logic TRM120 and TRM150 Rotary Mowers are designed for topping large areas quickly and efficiently. Ideal for regular maintenance of paddocks, orchards, driveways and other grassed areas.



TRM120H13FW



Three blade configuration results in a shorter, more manoeuvrable unit, greater accuracy with height adjustment and less tendency to scalp over rises.

The engine power is used more effectively so fuel usage should be reduced and any blade damage minimised.

The Logic TRM120 and TRM150 compact rotary mowers have three blades arranged to give a total working width of 1.2metres and 1.5metres which discharges cut material across the full width of the cutting deck. Cutting height can be adjusted in seconds and the height-adjustable drawbar means the TRM models are just as happy behind a 4x4 as they are behind an ATV, UTV or compact tractor. The drawbar can be offset for accurate edge work or cutting beneath overhanging vegetation.



TRM150B16FW

Key Features

- ▶ 1.2 metre and 1.5metre working widths.
- ▶ Simple cutting height adjustment from 20mm -160mm.
- ▶ TRM120 - Briggs & Stratton 12.5hp or Honda 13hp petrol engines.
- ▶ TRM150 - Briggs & Stratton 16hp petrol engine.
- ▶ Remote throttle control.
- ▶ Ignition kill switch for added safety.
- ▶ Height adjustable drawbar with offset facility.
- ▶ Optional electric start.



A safety kill switch and lanyard provide an instant engine stop facility for any hazardous situation eg. wire wrapping around the blades.



Cutting height adjustment can be carried out simply by moving the spring assisted height lever to one of 5 positions (from 20mm up to 160mm) and securing with the pin and clip.



Drawbar top link adjustment is carried out to level the cutting deck to suit whichever vehicle is being used to tow the mower. The offset facility on the drawbar is useful when cutting under overhanging vegetation.



The remote throttle gives control from the operator's driving position.

SWEEPER COLLECTORS

The Logic MSP120 Horse Muck Collector/Sweeper Collector is ideal for the regular collection of horse muck, helping to maintain healthy paddocks and horses. The machine is also ideal as a general sweeper for collecting grass cuttings, leaves, acorns or even general litter.



MSP120WT fitted with tine bar, seen here (right) breaking up 'rained in' horse droppings.



The manual unloading winch is easy to operate and features a geared system with controlled release.



The optional MSP121 tine bar is easily fitted and adjusted to contact more solid heaps of rubbish or animal droppings, breaking them up before the brush. It is easily adjusted by turning the large hand screw (above) to release and reposition the bar stem into one of 3 secure locating slots.



MSP120WT

A Honda 5.5 hp engine drives the 1.2 metre wide rotary brush, which has a simple height adjustment jack.

A centrally mounted floating drawbar allows the sweeper to be towed by any suitable vehicle. The wide wheels front and rear are suitable for use in soft ground conditions.

MSP120W



Throttle control is positioned close to hand and allows instant build up from idle, when required. Brush engagement is controlled via a centrifugal clutch which starts the brush when the engine revs are increased.



The MSP120 is powered by a Honda 5.5hp engine, with its legendary reliability and easy pull start system. This power unit gives the sweeper complete independence so that it can be towed by any suitable vehicle, depending on the location and conditions.

Key Features for MSP120

- ▶ 1.2 metre working width.
- ▶ Easy to start Honda 5.5hp engine.
- ▶ Remote throttle control.
- ▶ Easy brush height adjustment.
- ▶ Large low ground pressure wheels at the front, castor wheels at the rear.
- ▶ Floating drawbar for easy hitching and more compact storage.
- ▶ Large 588 litre hopper with strong manual winch for easy emptying.
- ▶ Mesh topped hopper visually indicates when hopper is full.



► MSP120 ON FINER SURFACES

The MSP120 works equally well on finer surfaces like this cricket ground where accuracy is essential.



On fine, dense artificial surfaces with very little pile, grit, leaves and particularly pine needles can become a problem. With the MSP these can be cleared up very quickly and the sweeping action helps break up any crusts or mould.



Raise and lower is adjusted by turning the screw jack handle which offers very fine adjustments. This gives a very accurate height control of the brush which is good for all surfaces, particularly short, fine piles.



Wide rear castor wheels ensure specialist grassed surfaces are not damaged.



Artificial surfaces which have a pile and infill material can be swept with MSP120M fitted with a mesh floor, so that the infill can be returned to the surface. The action of sweeping on any artificial surface helps keep the pile upright to preserve the 'natural' feel.



The brush is constructed of 4 banks of sturdy 150mm nylon bristles mounted in a strong frame and is supported by quality bearings to ensure a trouble free life.



Detail shown here of the brush rotor external bearing which permits a clean operating location and easy access for maintenance.

Key Features

- Easy and very accurate brush height adjustment.
- Optional mesh floor for infill and redistribution.
- Easy to use winch unloading system.
- Can be towed by any suitable vehicle.



The MSP120W (above) seen here sweeping all weather tennis courts, keeps the surface clear of dust, grit and other debris. In this case it is towed by a ride on lawnmower.

SEED HARVESTERS

Logic Brush Harvesters are ideal for harvesting seeds directly from meadows, grassland and heathland to be used for the enhancement and restoration of natural habitats.



Tipping the 600 litre hopper (left) to bag off heather seed from 3 chutes ready for further cleaning and drying.

► MSH420 SEED HARVESTER

The MSH420 is particularly suitable for heather seed collection due to its configuration and harvesting height range of up to 525mm. This machine plays a key role in the regeneration of many moorland habitats and conservation schemes.

The drawbar has 3 operating positions seen here with maximum offset to allow collection from untracked foliage.



◀ The MSH420 has a working width of 1.2 metres and can be towed by any suitable vehicle. Large 22 x 11-8 flotation tyres, ideal for soft or rough conditions, allow the brush to be raised from 0mm to a maximum of 525mm, using the remote controlled electric actuator. A 5.5hp Honda engine with remote throttle and centrifugal clutch drives the brush.



Shown here (above) collecting Alpine grass seeds to repair worn ski slopes and other similar areas. Image courtesy of Centro Flora Autoctona della Regione Lombardia - Native Flora Centre of Lombardy (Italy).



► MSH320 SEED HARVESTER

The MSH320 is a simplified version of the MSH420 and can be used for the collection of meadow grass seed and wild flower seed. Conservation teams are able to collect seeds easily from local donor sites for the reintroduction of native species into areas that have lost their botanical diversity.



Flotation wheels, including this rear castor wheel, are fitted as standard to ensure easy towing by any suitable vehicle over soft or rough ground conditions.



The brush is constructed of 4 banks of sturdy 150mm nylon bristles mounted in a strong frame. It can be raised to a maximum of 300mm using the hand operated jack and is driven by an easy to start Honda 5.5hp engine with centrifugal clutch.

The MSH320 has a 1.2 metre working width with large 22x11-8 flotation front tyres and 18x8.5-8 castor rear tyre for use on soft ground/rough conditions. It has a manual height adjustment screw to provide a range from 75mm to 300mm.

The remote throttle cable is clipped onto the towing vehicle during use and a throttle cable 'park' prevents tangles when the machine is not in use.



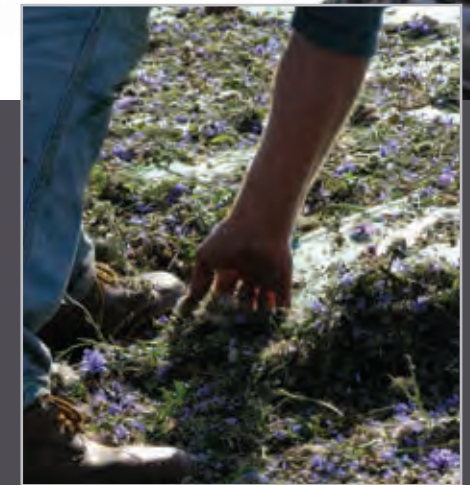
This model has a simplified drawbar and is towed in the central position.



MSH320



This model features a 600 litre capacity hopper with tipping rope and single pivot point. The contents would typically be tipped onto a tarpaulin or sheet for further processing before drying and cleaning (as shown right).

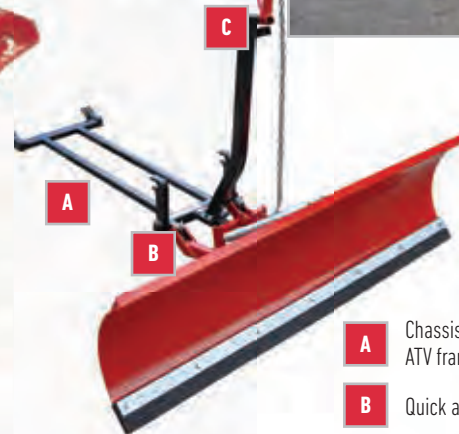


FRONT MOUNTED EQUIPMENT

The Logic System 20 front mounting system has been developed to utilise the power and manoeuvrability of ATVs and UTVs. Key to this is the bespoke chassis for each model which allows quick-attach use but does not affect the critical aspects of the vehicle eg. steering, brakes, suspension, etc.



▲ S228 snow plough, 1.5 metres wide with manual lift, rubber wearing strip and facility to angle left or right. It also features a spring assisted break-back mechanism to prevent damage when encountering hidden obstacles beneath the snow.



- A** Chassis quick attached to the ATV framework brackets.
- B** Quick attach jaws with securing pins.
- C** Raise and lower over-centre arm.

Key Features

- ▶ Quick attach front mounted equipment.
- ▶ Chassis does not affect critical parts of the vehicle.
- ▶ Chassis can be easily removed from the vehicle mounting brackets when attachment not in use.
- ▶ Raise/lower via simple over-centre lever or electric actuator.
- ▶ Sturdy construction for long life.
- ▶ Enables much more use of the host ATV or UTV.

Options

- ▶ S254 electric lift conversion kit.

▶ SYSTEM 20 – ATV USE

The System 20 range of equipment includes Power Brushes, Snow Ploughs, a Yard Brush and a Yard Scraper all of which attach in seconds.



S228 snow plough, 1.5 metres wide attached to this ATV in combination with a GDS150R salt spreader provides a very useful winter maintenance unit. The overall size enables working in confined areas and is perfect for cycle-ways and footpaths as well as larger areas such as roadways and car parks, etc.



S215H power brush (left) is ideal for rapid cleaning of roads, yards, grain stores, foot paths, parks and sports fields.

The 1.35 metre wide unit is powered by a Honda 5.5hp engine. The brush features a special end brush for sweeping close to walls and kerbs, is adjustable left or right and has accurate height adjustment. It features a safety kill switch fitted as standard and a parking leg for safe storage. This keeps weight off the bristles, preventing distortion. The S215B model is supplied with a Briggs & Stratton 6.5hp petrol engine.



S210 yard scraper - suitable for cow sheds, cubicle houses, pig units, poultry houses, etc. With a working width of 1.3 metres, the heavy duty one piece blade is fitted with replaceable bottom and wing rubber wearing strips. Manual lift or electric ram options.

▶ FRONT MOUNTED EQUIPMENT

UTVs offer a powerful work centre and when fitted with Logic System 20 attachments, the full benefits of this vehicle can be realised. Central to this is a bespoke bracket for each UTV model which interfaces with a universal back plate for quick-attach equipment mounting.



UTS215BR power brush - 1.68 metres wide with remote electric controls to lift and angle left, right or straight. Shown here with a Briggs & Stratton 6.5hp petrol engine. The UTS215HR model features a Honda 5.5hp petrol engine.



UTS215 parking leg - allows the power brush to be stored without the bristles taking any weight therefore preventing distortion of the brush. This prolongs the life of the brush bristles and permits more stable parking.



A wired control box operates the 12v actuator ram which raises and lowers the front mounted equipment and includes the added safety feature of an engine kill switch. This can be positioned close to the operator using the ample amount of cable provided.



UTS210 yard scraper - suitable for cow sheds, cubicle houses, pig units, poultry houses, etc. With a working width of 1.7 metres, the heavy duty, one piece blade is fitted with replaceable bottom and wing rubber wearing strips. Raise and lower is operated from inside the cab with the remote controlled electrical actuator.

▶ SYSTEM 20 - UTV USE

UTS201 snow plough (right) fitted to the universal back plate with electric raise and lower ram fitted. The back plate part of the mounting system attaches to the host vehicle chassis via a bespoke interface bracket. The universal back plate and electrics can all be removed easily in seconds or can remain on the vehicle without affecting any of the vital functions and clearances - steering, suspension and brakes. All attachments are quickly removed via the two pins at the base of the back plate.



UTS201 snow plough - the extra width and power of a UTV means that the blade can be wider than ATV snow ploughs - this unit is 1.8 metres. The supplied in-cab controlled, 12v electric ram provides the raise and lower facility. The snow plough can be manually angled to either side and is suitable for clearing snow up to 300mm in depth. Safety features include a rubber wearing strip and spring loaded 'break-back' system which operates if the blade should hit an obstacle hidden beneath the snow.

ELECTRO BROADCASTERS, SPREADERS / SEEDERS

Logic spreading systems include the EBC range of electro broadcasters, developed to operate via the carrying vehicle's 12v electrical system, which provide great versatility and accuracy especially when applying low volume rates. There are several options of Logic towed spreaders offering larger hopper capacities together with a wide range of specifications to meet all customer requirements.



EBC-TFS80



EBC-TFS80



EBC-TFS120PSL mounted on TPL115

The range includes two hopper sizes of 85 litres (above) and 130 litres (above right). The 85 litre hopper is ideal for mounting on an ATV where high operational speed and low ground pressure can provide very high work rates. The 130 litre hopper gives extra capacity when used on larger vehicles such as UTVs, tractors and self-propelled sprayers.

► EBC-TFS

The EBC-TFS range is designed to spread a wide range of products including slug pellets, fertilizer, all types of seed, trace elements and minerals, etc. The all-welded galvanised frame, polyethylene hopper and stainless steel metering plate ensure a long, trouble free life.



Flow rate adjustment: the unique metering plate mechanism is key to this reliable and accurate system. Twin feed apertures allow for large and small products to be successfully handled - even when a very low application rate is required.



Bias setting: this adjustment is cleverly incorporated into the metering plate, compensating for the different characteristics of each type of product. In this way, even spreading can be consistently achieved.



Low impact delivery system - this central cone, unique to Logic machines, reduces the impact of the product hitting the high-speed spinning disc (left). When slug pelleting or spreading fertiliser this minimises 'dusting' (when the product breaks up on impact with the disc). It is also a major benefit when broadcasting seeds, as they are protected from damage compared with some other systems. This leads to higher germination rates.

Key Features - all EBC Models

- ▶ High quality construction with stainless steel metering parts.
- ▶ Unique metering plate, suitable for small seeds and low application rates.
- ▶ Easy adjustment of flow rate and bias setting.
- ▶ Can be secured on either horizontal or vertical mounting.
- ▶ Low impact delivery system to prevent break up of pellets.
- ▶ Translucent hopper shows contents level at a glance.
- ▶ Spread width options up to 30.0 metres.



▶ ELECTRO BROADCASTERS 85 litre and 130 litre capacities

Logic's larger electro broadcaster model is ideal for UTVs, tractors and self-propelled sprayers. All hoppers are translucent which allows product fill level to be checked at a glance and have an outlet drain cap to allow quick and simple emptying of unused material from the hopper.

EBC-TFS120PSL with 130 litre hopper and powered flow shut-off control.



The range has two motor sizes. The EBC-TFS80 range uses a motor with a power demand that is compatible with most ATV electrical systems. The EBC-TFS120 range uses a significantly up rated motor which is capable of delivering consistently wider spread widths; this range has been designed to suit the electrical systems found on larger vehicles such as tractors or self-propelled sprayers and is therefore recommended for UTV use (see chart below).



TPL115 Mounting frame (left) for 3 point linkage on tractors, suitable for larger electro broadcasters when spreading grass seed mixtures, fertilisers, etc.



Powered Control Box - all powered models are supplied with a control box which comes with a 'disc control' ON/OFF and a 'flow control' OPEN/CLOSED switch.

Disc Control ON/OFF

Flow Control OPEN/CLOSED

Both powered control box units are supplied with plenty of cable to allow 'in cab' positioning of the control box, close to the operator.



Powered Synchro Control Box - all powered synchro models are supplied with a control box which has the additional feature of a variable disc speed control dial allowing the operator to alter the spread width, particularly useful when working with drills/harrows, etc. where reducing the spread width to match that of the implement is important. This control box also incorporates a 'turbo drive' switch which provides maximum power to the disc ensuring 'slug pellets' reach 24.0 metre tramline widths and beyond.

Disc Control ON/OFF

Variable disc speed

OPEN/CLOSED

'Turbo Drive' Disc ON/OFF control

| Model | Capacity | Control system | Spread width | | Suitable vehicle |
|---------------|------------|--------------------------|----------------------------|---------------------------|--|
| | | | Slug Pellets* | Grass seed | |
| EBC-TFS80 | 85 litres | Manual | 12.0 - 24.0 metres | Up to 6.0 metres | ATV only |
| EBC-TFS80P | 85 litres | Powered | 12.0 - 24.0 metres | Up to 6.0 metres | ATV, UTV, 4x4, tractor, self-propelled sprayer |
| EBC-TFS80PS | 85 litres | Synchro - variable speed | Variable up to 24.0 metres | Variable up to 6.0 metres | ATV, UTV, 4x4, tractor, self-propelled sprayer |
| EBC-TFS120P | 85 litres | Powered | 24.0 - 30.0 metres | Up to 6.0 metres | UTV, 4x4, tractor, self-propelled sprayer |
| EBC-TFS120PL | 130 litres | Powered | 24.0 - 30.0 metres | Up to 6.0 metres | UTV, 4x4, tractor, self-propelled sprayer |
| EBC-TFS120PS | 85 litres | Synchro - variable speed | Variable up to 30.0 metres | Variable up to 6.0 metres | UTV, 4x4, tractor, self-propelled sprayer |
| EBC-TFS120PSL | 130 litres | Synchro - variable speed | Variable up to 30.0 metres | Variable up to 6.0 metres | UTV, 4x4, tractor, self-propelled sprayer |

Note: * Maximum slug pellet spread widths are achievable subject to the following: Good quality slug pellets (wet extruded 2.7mm min), suitable voltage output from vehicle, minimum disc height of 1.8m, maximum forward speed of 16kph (10mph) and suitable weather conditions.

▶ GROUND DRIVEN SPREADERS – LDS RANGE

A range of spreaders with 120 litre, 240 litre or 380 litre capacity. Simple, robust and reliable. Ideal for general spreading and can be towed by any suitable vehicle.

The smallest capacity LDS120DS is very good for paddocks and small acreages or for top dressing strip grazed fields. In winter, it is also capable of spreading de-icing products (see Salt Spreader section). The larger capacity models are suitable for most farm situations, especially smallholdings or on upland farms where an ATV or UTV does most of the work, especially on hilly ground or bank sides. LDS380 has an optional LDS387 hopper tonneau cover available (not shown).



LDS240



Adjustable flow control can be operated from the driving position on ATVs. Disc drive engagement is extremely simple and can be disengaged when not spreading.



LDS120DS

LDS380



There are few moving parts on this spreader range and maintenance is minimal. The quality galvanised finish ensures the chassis and mounting frame will last for many years.

Key Features – all LDS Models

- ▶ Simple, robust spreaders.
- ▶ Towable by any suitable vehicle.
- ▶ Spread width up to 15.0 metres.
- ▶ Chassis and frame galvanised for long life.
- ▶ Low ground pressure tyres.
- ▶ Translucent hopper shows contents level at a glance.



▶ ENGINE DRIVEN SPREADERS

These spreaders are designed to be used when ground conditions are soft or where no tractor is available. The hopper can be filled to suit the capacity of the towing vehicle on the terrain being treated.



VC500

Models: VC100 (Vicon 303) 250kg capacity. VC500 / VC500TA (Vicon 503) 500kg capacity.

A well designed but simple trailed low ground pressure chassis featuring a Vicon oscillating spout spreader with 250/500kg capacity. Powered by a Honda 5.5hp petrol engine, this unit provides a reliable, ultra-low ground pressure system, ideal for early application on arable crops or for general work on grasslands. Tandem axle is available as an option to further reduce ground pressure and provide increased stability over rough ground.

▶ SYSTEM 40 CHASSIS

A chassis that is not specific to any spreader or sprayer, providing great flexibility.



S40S11

System 40 chassis provides a low ground pressure option for tractor sized equipment. Existing spreaders and sprayers are simply bolted onto the unique cross member of this universal chassis. It features an adjustable axle track width, adjustable equipment platform height, a manual ON/OFF handle, flotation wheels and a 5.5hp Honda engine with PTO type interface.



System 40 single axle (above) fitted with an Avadex™ TMA4 applicator to provide an ultra-low ground pressure unit for use in soft conditions.



System 40 tandem axle fitted with spreader (left) or with sprayer (above) provide very stable units suitable for rough ground or for very soft conditions. Both applications are shown here with S40T13 models, featuring reverse drive with centrifugal clutch, to provide the same PTO rotation direction as a tractor.

SALT SPREADERS

▶ GROUND DRIVEN SALT SPREADERS

All Logic GDS and PDS professional salt spreaders employ the same 'moving floor' technology found in highway sized machines, available with hydraulic, engine or ground drive. Logic GDS & PDS salt spreaders can be teamed up with a wide range of vehicles, from ATVs & UTVs to 4x4s, tractors, telehandlers & fork lifts, to provide a reliable, efficient winter maintenance capability. They are ideal for use on a diverse range of sites from hospitals & universities to factories, retail parks, roadways & pedestrian precincts.



GDS150R

The GDS range comes with two options of equipment; the 'R' models have full lighting and mudguards, the 'S' models have no lighting or mudguards, where the machine is only used on a private site or in a traffic free environment.



GDS150R with optional GDS158 tonneau cover. ATV fitted with S228 Snow Plough.



GDS250 models feature a choice of standard gearbox for spread widths of 1.5-10.0 metres, or high speed gearbox for spread widths of 3.0-14.0 metres. Both at forward speeds between 5-15 mph.

GDS251R with high speed gearbox.

For specification and application rate details, see page 41

All Logic GDS and PDS Salt Spreaders feature...

- ▶ Hopper length moving floor and agitator to handle any de-icing products including wet rock salt.
- ▶ Stainless steel hopper, spreading disc and peripheral components for long life.
- ▶ Accurate application control and the ability to spread varying widths and to left or right.
- ▶ Low filling height, easy to adjust and operate.

Options ▶ Tonneau Cover ▶ Flashing beacon ▶ Disc shroud



- A** Flow rate setting adjustment.
- B** Chute and deflector plates.
- C** Cam and agitator drive.

The LDS120DS spreader (right) is ideal for smaller areas but requires dry bagged salt or other free flowing de-icing products. It is ground driven and can be towed by any suitable vehicle. Simplicity of design and operation with minimal maintenance ensures a long, trouble free life. Shown here with optional disc shroud fitted to reduce spread with to approx. 1.0 metre.



▶ TRAILED/DECK MOUNTED ENGINE DRIVEN SALT SPREADERS

The PDS range of salt spreaders has the same technology as the GDS machines, only these are fitted with a 5.5hp Honda engine which drives the conveyor, agitator, spreading mechanism and disc. Options include a de-mount model (far right) and a towed model (below) which features suspension, overrun brakes and full lighting equipment, allowing it to be towed between sites at normal road speeds. Once the engine is running and the engine speed is set, the spreading mechanism can be switched on and off using a wired remote control box which allows mounting in the cab of the towing/host vehicle.



PDS354RB with PDS208 tonneau cover.



Optional PDS210 disc shroud to further reduce spread width.



PDS hoppers are manufactured from stainless steel with a capacity of 585 litres (approximately 750kg). The mesh hopper screen, the sluice gate and the deflector vanes which allow salt to be cast to left or right are in common with the GDS range. Optional extras include a PDS208 tonneau cover, quick-attach PDS210 disc shroud and PDS106 flashing beacon.



The de-mount version can be secured into a pick-up, flat bed truck or onto a trailer. Importantly, the de-mount version has a gross weight of 1000kg which allows it to be used in pick-ups and other vehicles. This makes use of an existing fleet vehicle as a professional salt spreading asset.



PDS354D

The PDS has application rates of between 5-80 grams/square metre and can spread salt from 3.0-14.0 metres which is variable through adjusting the engine rpm and drive pulley option from the two available. The unit can spread salt to the left or right allowing it to spread underneath parked cars. Optional PDS211 disc shroud available.

The PDS354RB Salt Spreader provides a full 'Highway Use' specification, type approved by the VCA for the European Community Whole Vehicle Type Approval (ECWVTA).



Increased work rates are achievable with the ability to drive at normal road speeds between multi-use contracts utilising a wide variety of suitable towing vehicles.



The control box can be positioned close to the towing vehicle driver's sitting position, for easy of use.



PDS354D secured into a trailer provides another option.

▶ DECK MOUNTED ENGINE DRIVEN SALT SPREADERS continued

The PDS150D Salt Spreader is demountable and sized to fit onto the rear carrying platforms of UTVs. This unit is ideal for roads, pathways, city centres, cycleways and car parks, etc.



The PDS150 range of salt spreaders has the same technology as the GDS machines, only these are fitted with a 3.5hp Briggs & Stratton petrol engine which drives the conveyor, agitator, spreading mechanism and disc. Once the engine is running and the engine speed is set, the spreading mechanism can be switched on and off using a wired remote control box which allows mounting close to the operator in the host vehicle.

PDS150D fitted into this UTV along with a Logic UTS201 1.8 metre wide snow plough (right) provides a very useful winter maintenance unit.

Filled with a full load and set for a precautionary spreading rate of 10gr/sqm, with a spreading width of 3.0 metres, it would cover 11 km.



Options for GDS150 and PDS150 models include...

- ▶ GDS158 Tonneau Cover with support (above right).
- ▶ PDS106 Flashing Beacon (above left).
- ▶ PDS211 Disc shroud.



PDS150D mounting onto a vehicle rear platform is enhanced by rubber pads under the chassis to grip the surface and integral ring mounts for tie down straps.



PDS150D can be mounted into any suitable utility vehicle or pickup.



The control box is located close to the operator's driving position.



▶ TRACTOR 3 POINT LINKAGE, FORKLIFT/TELEHANDLER MOUNTED SALT SPREADERS

The PDS150T is designed for tractor 3 point linkage mounting, to enable hydraulic operation. Fitted with category 1 and 2 link-age points the unit is suitable for 25+hp tractors with a lift capacity of approximately 550kg. This salt spreader is ideal for roads, car parks, pedestrian precincts, cycleways and industrial sites, etc.



The PDS150F and PDS150F1 are hydraulically driven and sized to fit onto the tines of a fork lift or telehandler. Its design provides a low filling height and a low centre of gravity. Mounting is very simple using pallet fork tubes to slide into with locking pins behind the fork uprights. PDS150F units are suitable for machines 1.5T to 3.5T with up to 70lt/min oil flow rate. PDS150F1 units are suitable for machines 3.5T + with 70+lt/min oil flow rate.



PDS150F is designed for fork lift trucks.



PDS150F1 units are designed for larger telehandlers with a higher oil flow rate.

Hydraulic motor drive requires a minimum of 25lt/min to provide a spread width range of 3.0 - 14.0 metres. Hydraulic pipes couple into the vehicles auxiliary service.

Salt Spreader model specification and application rate details

| Type | Model | Hopper Capacity lts | kg | Length mm | Width mm | Height mm | Unladen Wt / kg |
|--------------|------------|------------------------|---------------|--------------|-------------|--------------|--------------------|
| TRAILED | LDS120DS | 120 | 130 dry salt | 1960 | 1575 | 1225 | 84 |
| TRAILED | GDS150R/S | 270 | 335 rock salt | 2310 | 1300/1290 | 1080 | 238/220 |
| TRAILED | GDS250R/S | 465 | 600 rock salt | 3020 | 1300/1290 | 1030 | 298/279 |
| TRAILED | PDS354RB | 585 | 750 rock salt | 3120 | 1600 | 1270 | 386 |
| DE-MOUNTED | PDS150D | 270 | 335 rock salt | 1565 | 1140 | 1030 | 195 |
| DE-MOUNTED | PDS354D | 585 | 750 rock salt | 2100 | 1200 | 1105 | 272 |
| 3pt LINKAGE | PDS150T | 270 | 335 rock salt | 1800 | 1077 | 917 | 230 |
| PALLET FORKS | PDS150F/F1 | 270 | 335 rock salt | 1744 | 1080 | 950 | 245 |

| Spread Rate gr / sq metres | Distance km at 1.5 metres wide | Distance km at 3.0 metres wide | Distance km at 6.0 metres wide | Total Area Covered per 1000 sq metres |
|-------------------------------|--------------------------------------|--------------------------------------|--------------------------------------|---|
| 10 | 22 / 40 / 50 | 11 / 20 / 25 | 5.6 / 10 / 12.5 | 33.5 / 60 / 75 |
| 20 | 11 / 20 / 25 | 5.6 / 10 / 12.5 | 2.8 / 5 / 6.25 | 16.75 / 30 / 37.5 |
| 50 | 4.5 / 8 / 10 | 2.25 / 4 / 5 | 1.1 / 2 / 2.5 | 6.7 / 12 / 15 |
| 80 | 2.8 / 5 / 6.25 | 1.4 / 2.5 / 3.12 | 0.7 / 1.25 / 1.56 | 4.2 / 7.5 / 9.37 |

Key: GDS150 PDS150 models / GDS250 models / PDS354 Models



The oil flow control valve (above) allows the operator to select the optimum spreading width for the area being treated, from 3.0 - 14.0 metres.

PDS150T salt spreaders provide a compact easy to use system with a low filling height, a low centre of gravity and even distribution of weight during the spreading process which is important for vehicle stability. The unique agitation system and moving floor conveyor to the spinning disc provide a reliable and efficient system to spread rock salt and other anti-icing products.

PDS150T in storage mode using the integral support legs.

▶ DE-ICING & ANTI-ICING MOUNTED SPREADERS

Spreading units of this type are ideal for specialist free flowing de-icing products in sensitive areas where rock salt would be too corrosive or where it is important to leave no messy, transferable residue eg. hospitals, shops, airports, schools, railway stations, etc. These products are usually fully biodegradable and are not harmful to humans, animals or vegetation. They are more effective than rock salt at lower temperatures, even down to -20°C in some cases. These spreading units can be used to either protect surfaces prior to expected frosts or remove existing frost deposits, simply by adjusting the application rate.



EBC-TS300PP 300 litre capacity with cushion pads to allow easy securing on the carrying vehicle. Suitable for pick-ups, UTVs and other similar vehicles.

The EBC-TS range of spreaders are designed to broadcast free flowing de-icing products (NOT rock salt - see GDS/PDS models on pages 38-41). Each unit features a stainless steel metering unit and corrosive resistant fixings. The mounting frame on the 85 litre and 130 litre models not only simplifies the attachment to the carrying vehicle, it allows tilting of the unit to affect the spread width and keep the base plate free of dust build-up which is important for component protection. The spreading disc has 4 vanes rather than 3, with more height than average spreaders to prevent build up of material on the disc. All these components are designed to achieve good performance over a long life.



EBC-TS85PP
85 litre capacity,
ideal for ATVs.



Stainless steel spreading disc with easy bias adjustment. Unique flow control and disc shape to maintain an accurate spread pattern.



The control box allows control of the material and disc speed which dictates spread width, useful when moving from footpaths to roadways.

Key Features

- ▶ Powerful 12v DC sealed motor to ensure long life.
- ▶ Stainless steel spreading disc with 4 tall vanes.
- ▶ Adjustable base plate or cushion pads for easy set up on the carrying vehicle.
- ▶ Bias setting to allow different spread patterns.
- ▶ Belt driven disc to improve motor life and starting torque.
- ▶ 2 speed disc control to provide 2.0 metre or 6.0 metre spread widths.
- ▶ Translucent hopper on 85 litre and 130 litre models for easy sight of contents level.
- ▶ Wired remote control box to permit operation from the driver's seat.



EBC-TS130PP 130 litre capacity, sized to fit a UTV, side by side, pick-up or compact tractor type vehicle where there is a significant area to cover whilst using an everyday vehicle as the means of travel.

▶ DE-ICING & ANTI-ICING SPRAYERS

Logic spraying units are ideal for brine and specialist de-icing liquids for use in sensitive areas where spreading rock salt would be too corrosive or where it is important to leave no messy, transferable residue eg. hospitals, schools, shops, airports, railway stations, etc. Ice melt liquids are super fast in operation for instant de-icing, have excellent adhesion to all surfaces and are fully soluble.



TS410S trailed sprayer with 270 litre capacity and remote ON/OFF control with OBS104D boom, ideal for towing behind any suitable vehicle with a 50mm ball hitch.

Many spraying widths and patterns can be achieved by folding booms and turning each spray nozzle on or off.

TS625 trailed boomless sprayer (right), 600 litre capacity with Honda engine driven 25 litre / min pump with variable spray widths up to 11.0 metres. Ideal for treating a large area quickly.



TPS390SE (left) 3 Point Linkage mounted model 270 litre capacity with OBS104D 3.0 metre boom, suitable for compact tractors or similar ground care equipment.

Key Features

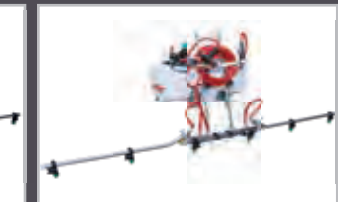
- ▶ Specialist coated framework to prevent corrosion.
- ▶ Translucent tank for easy sight of contents level.
- ▶ Filter basket incorporated into the top filling lid.
- ▶ In-line filter.
- ▶ Drain plug.
- ▶ Optional 12v ON/OFF control for in-cab use.
- ▶ Optional choice of spraying widths & hand lance.



DMS390S deck mount model with 270 litre capacity and OBS104D 3.0 metre boom, ideal for UTVs, pick-ups, etc.



OBS135S 135 litre flat bottomed base sprayer with OBS104D 3.0 metre boom ideal for UTVs or compact tractors.



OBS690S 60 litre on board sprayer with OBS104D 3.0 metre boom, OBS116 'Y' piece and OBS113 hand lance. Ideal for ATVs to access footpaths or weight sensitive areas.

ACCESSORIES

Logic has developed and selected a number of products to enhance the experience of using an ATV or UTV. These are all high quality products designed to give years of excellent service.



ATV033 Safety Helmet

ATV005/5B handlebar muffs are universal to all ATVs. They have a durable outer cover with thermal lining which provides good protection and helps to keep hands warm, all year round. The design has wide cuffs which allows hands to easily access all the controls. The muffs are available in ATV005B black.



▶ SAFETY HELMETS AND HANDLEBAR MUFFS



ATV032/33 safety helmet designed to comply with Health & Safety Executive recommendations as per Agricultural Information Sheet No 33 (AIS33). Two shell sizes: ATV032 small/medium (54-57cm) and ATV033 large/extra large (58-62cm). Each helmet comes complete with a full set of inserts to suit all usual head sizes and features a raise/lower visor. Weighing 540g, this helmet is so convenient and comfortable that the user is more inclined to leave it on continuously, even when working away from the ATV. The "open ear" design allows the user to hear clearly and be aware of what is going on, whilst also enabling the comfortable wearing of glasses and/or the use of a mobile phone, without the need to remove the helmet.



ATV034 crash helmet - for operators who prefer a traditional motor cycle helmet, recommended for sport and leisure. It is considerably heavier than the safety helmet, at 1540g, featuring an open face, peak and raise/lower visor. Sizes: ATV034BS small (56-57cm), ATV034BM medium (58-59cm), ATV034BL large (60-61cm) and ATV034BXL extra large (62-63cm). This is a high quality product with outstanding construction and comfortable lining.



Logic ATV074/77/XXX windscreens have been specially designed for ATVs, incorporating a stylish fibreglass handlebar fairing which creates an effective brush guard and protection from wind chill. The screens are made from durable 4mm cast acrylic with edge trim for added safety. Colour choice is red or black.

▶ SAFETY, COMFORT & STORAGE

More products to improve driving safety, comfort and storage to get the most out of your ATV or UTV.



ATV049L1 heated grips have been specifically designed with ergonomically engineered grip structures to provide warmth and comfort to users in conditions ranging from mild chill to very cold. They feature an easy-to-fit glueless clamp fitting, thicker rubber in areas of maximum wear, diamond tread patterns where maximum grip is required, a waffled area for fingertip control and siped tread patterns for high levels of grip and feel. The kit includes all required parts to mount on a wide range of ATVs. The switch unit provides OFF / HIGH / LOW settings to cope with varying conditions.



ATV130 spraying safety kit with protective clothing. All you need to comply with Health & Safety Executive recommendations. Contains face shield, apron, nitrile gloves, respirator, nitrile gauntlets and a 500ml bottle of eye irrigation, all contained in a durable canvas holdall. The chemical resistant coverall with a hood to use with the safety kit is supplied separately and in four sizes - ATV130M, ATV130L, ATV130XL and ATV130XXL.



KOL91710 bucket hugger - a contoured cargo tray 900 x 450 x 250mm designed to hold 2 x 25 litre buckets. Constructed from double walled polypropylene with drain holes in the base, this is supplied with a mounting clamp and fittings or can be temporarily attached with bungee straps (not supplied).

KOL92145 tank storage bags (right) - two waterproof bags 200 x 245 x 100mm. Ideal for keeping items dry and within easy reach. Great for lambing time, for lubricants, tags, sprays, medicines, etc. They are supplied with quick-attach clips for easy attachment or removal.



STORAGE-KOLPIN

KOL93101 and KOL93201 (below) - contoured cargo boxes for front or rear racks of ATVs. These feature the latest design for extra strength and durability, with lockable secure latches, heavy duty hinges and weather tight, double walled lids. Dimensions are 768 x 343 x 224mm (KOL93101) and 943 x 440 x 345mm (KOL93201).



KOL93101



KOL93201

► GRIPS, GUN BOOT AND BASKET

A selection of products to safely secure items on an ATV or UTV to prevent damage or loss when travelling from store to site.



KOL20073 UTV gun rack designed for safe mounting and transportation of firearms in UTVs. The kit includes a rubber strap to hold firearms securely and eliminate vibration or movement, with capacity for two firearms.



KOL21540 ratchet grips (pair) designed to grip any implement such as a shotgun, rifle, poles, shovel and pipes up to 100mm in diameter. Simple push-button release mechanism gives fast access to items in this versatile and secure system.



KOL21510 Rhino XL grips for ATV mounting (pair). Excellent Rhino XL grips with the same features as the UTV model grips with base plates designed to fit ATV racks or any flat surface.



KOL21535 Rhino XL grips for UTV mounting (pair). Clamps are sized for UTV frames. The grips tilt and rotate, securely holding guns, poles, shovels, etc. at varying angles.



KOL53200 mesh basket attaches to a UTV frame or mesh, or to an ATV rack. Measuring 914.4 x 177.8 x 177.8mm (36" x 7" x 7") this unit is ideal for storing smaller items. The depth of this basket helps retain items over rough ground.



KOL20032 all-metal loop bracket to securely fit Gun Boot 6.0 to ATV racks, UTV frames or any flat, drillable surface.



KOL20074 riser plate (left) for the UTV Gun Rack, required for UTVs with a centre floor hump. Photo (above) shows typical mounting.



KOL21510 Rhino XL grips (left) on the front carrier of this ATV for secure rifle mounting which allows quick access.



KOL20025 gun boot 6.0 'Impact' - large gun boot to take firearms up to 1.3 metres in length including slings and scopes up to 50mm. This boot features a removable shock absorbing liner.



▶ SECURITY AND GENERAL

Security products are worth fitting for peace of mind and possible insurance premium reductions, particularly from NFU Mutual.



Thatcham

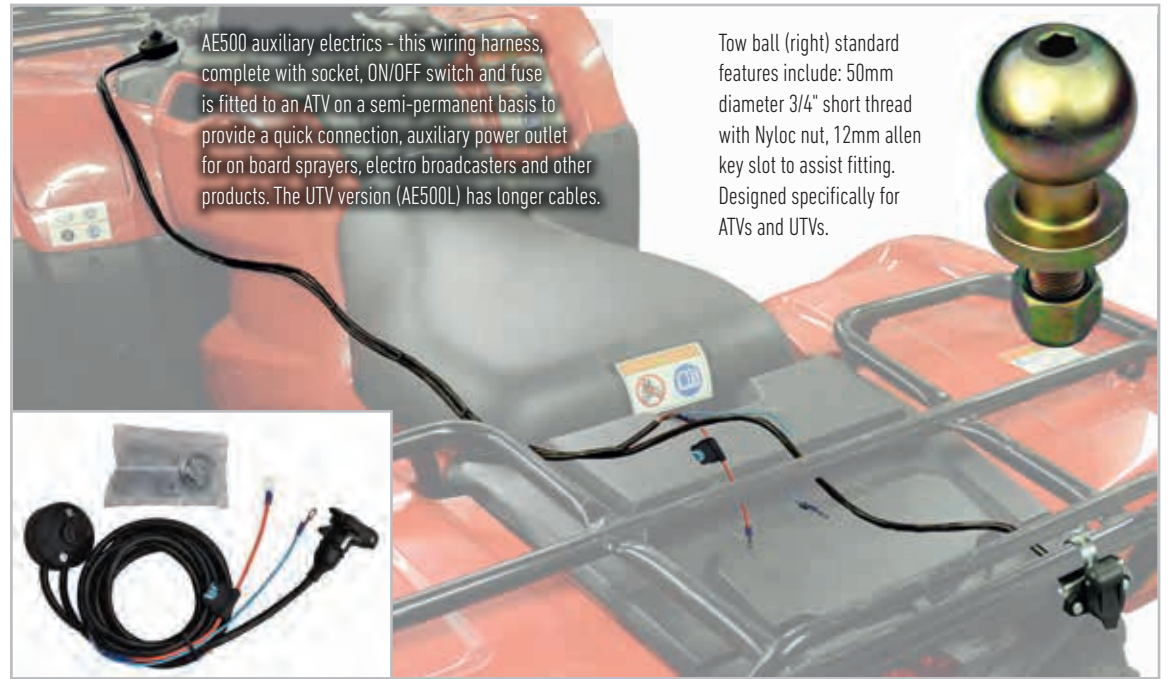
ATV114 security chain and lock. A heavy duty 2.0 metre chain, Thatcham-approved for front line security of an ATV or UTV. The chain can secure to optional ground anchors or any immovable object with suitable anchor point. Supplied with 3 x replaceable keys.



ATV116 block ground anchor - this 'block' is useful in high traffic areas as its low profile allows it to be driven over without damage. The double thickness hardened steel makes it very difficult for the block to be breached. Once attached, the bolt heads are rendered useless to prevent extraction.



ATV115 ground anchor - this swivelling security ring is attached to a secure surface by ground bolts. Once the bolts are secure they cannot be extracted and the swivelling ring makes it difficult to gain any purchase on the anchor which is made from cropper and saw-resistant materials.



AE500 auxiliary electrics - this wiring harness, complete with socket, ON/OFF switch and fuse is fitted to an ATV on a semi-permanent basis to provide a quick connection, auxiliary power outlet for on board sprayers, electro broadcasters and other products. The UTV version (AE500L) has longer cables.

Tow ball (right) standard features include: 50mm diameter 3/4" short thread with Nyloc nut, 12mm allen key slot to assist fitting. Designed specifically for ATVs and UTVs.

KOL96850 recovery strap - a strong 7.2 metre, 4500kg rated webbing strap, each end fitted with a forged steel hook and safety clip, to assist recovery of a second ATV or UTV.



ATV110 ratchet straps - these 5.0 metre long ratchet straps are ideal for securing on board sprayers to carriers with no metal framework.



ATV111 puncture repair kit - this kit is suitable for repairing off-road tubeless tyres only. It contains everything you need to repair up to 30 punctures, with the huge benefit of being able to complete the repair from the outside without having to remove the tyre from the wheel and in most cases leaving the wheel on the vehicle. A great time and cost saver!



▶ WINCHES, WHEELS AND COMPONENTS



ATVXXX replacement seat covers – for replacing worn or damaged seat covers. Each cover is designed to custom fit most popular models of ATV.



KOL93640 replacement seat cover – a universal seat cover to fit most ATVs. Elastic sure-fit design made from 900 denier nylon for long life, to protect a new seat or replace a worn one.



KOL95110 ATV cover sheet. Standard features include: black Durapoly nylon construction, reinforced corners, winch gusset, tie-down grommets. Dimensions 2410mm(l) x 1270mm(w) x 1270mm(h).



ATV Model



UTV Model

WINXXX ATV/UTV winch – an essential accessory for self recovery and for forestry-type applications. Strong high quality 12v electric winch with steel rope, hook and wired remote switch. Specific fitting kit available to suit popular ATV/UTV models. Please speak to your Logic dealer for more details.

Popular spare parts and components - we provide supply key components for self-build projects too.



C910 lockable coupling 50mm supplied with a fitting kit for Logic swivel hitch drawbars.



C900 coupling 50mm Winterhoff for Logic CM series swivel hitches.



SA235 stub axle 35mm square, weld on. SA200 stub axle heavy duty 40mm square, weld on.



C100 coupling 50mm pressed steel, plated.



CM200 coupling 50mm swivel hitch, bolt on. Fits CT / OCT, RT / ORT, DST trailers.



SA235D stub axle 35mm, bolt-on. SA240D stub axle heavy duty 40mm square, bolt-on.



CM100 coupling. 50mm swivel hitch, (left) weld on – sold as kit.



Tandem axle beam unit options. Normally fitted with WT400 or WT500 wheels and tyres.



SU311B suspension unit 750kg pair. Features a rubber progressive system, with excellent dampening qualities.



SAX range Al-Ko suspension axles 750kg, unbraked and braked, various widths.



WT400 22 x 11 - 8 flotation tyre and rim. Basic value for money low ground pressure wheel / tyre.



WT500 22 x 11 - 8 'Compass' flotation tyre and rim, suitable for more demanding use.



WT831 23 x 10.5 - 12 ultra-low ground pressure quality tyre for heavy duty use.



WT801 25 x 10 - 12 tyre and rim, larger diameter to increase ground clearance.



WT510 22 x 11 - 8 turf tyre and rim. Round shouldered low impact.

Logic sales are handled by our national dealer network which gives the customer access to:

- ▶ Local delivery.
- ▶ Products fully assembled and given a pre-delivery inspection.
- ▶ Full instruction at point of delivery, including Health & Safety recommendations.
- ▶ Local support and after sales service for any future servicing or repairs.

Your Local Dealer

If you are unsure who your local dealer is, please contact our main offices.

LOGIC - proud members and supporters of:



For further information visit the Logic website for more detailed product specifications and to watch videos of many of our products in action.

Follow us on...



www.LogicToday.co.uk

sales@LogicToday.co.uk



Videos available online

This symbol indicates a video of the product in action is available on our website at LogicToday.co.uk

1 LOGIC: North & Export

Foundry Industrial Estate, Bridge End,
Hexham, Northumberland NE46 4JL
Tel: (01434) 606661
Intl: +44 (1434) 606661

2 LOGIC: South

New Whiteway Works,
Fossecross Industrial Estate, Chedworth,
Cheltenham, Gloucestershire GL54 4NW
Tel: (01285) 720930

